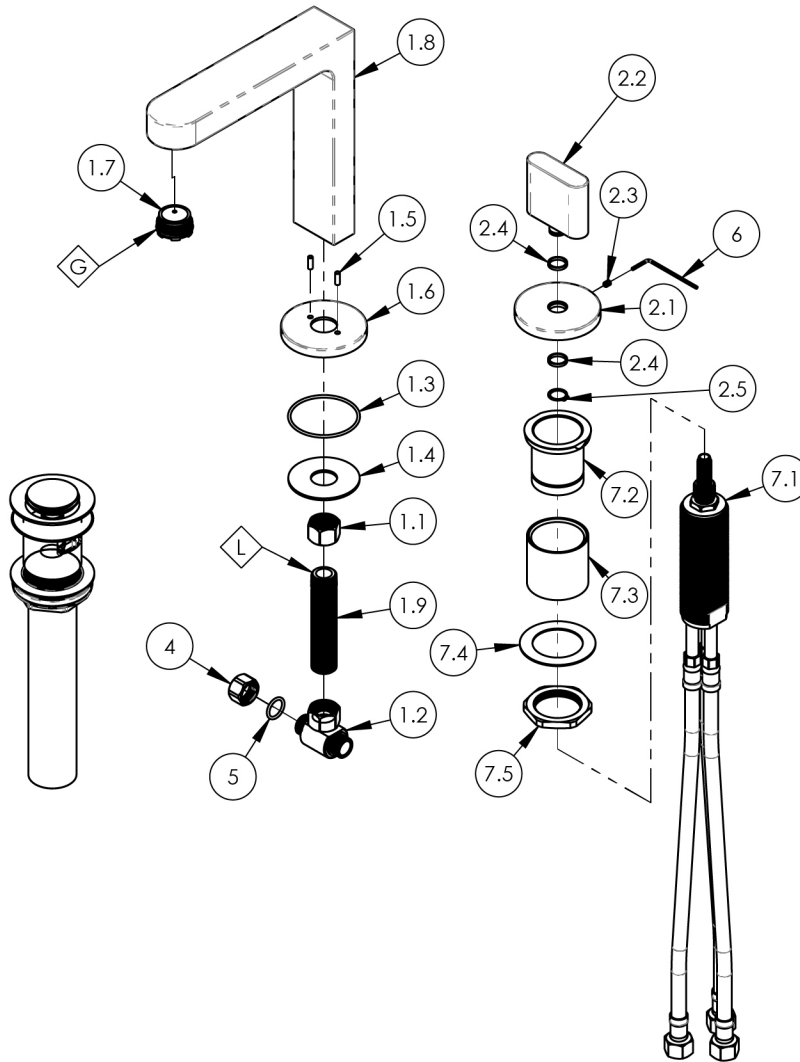


NOTE(S):
1. PART NUMBER, "/00" DENOTES PART SHALL HAVE FINISH.

2. APPLY NSF COMPLIANT GREASE TO ANY O-RING, SEALING JOINTS, AND/OR PIVOTAL POINTS.

3. APPLY NSF COMPLIANT LOCTITE TO THREADED AREA.



ITEM NO.	PART NUMBER	DESCRIPTION	QTY.
1	3-583/00	ASSY, WIDESPREAD LAV HIGH SPOUT, ROND	1
1.1	10746	NUT, 3/8"-18 NPSL	1
1.2	1-112	TEE VALVE, 3/8" NPSM X 3/8" COMPRESSION	1
1.3	90031	O-RING, 1-3/4"ID X 1/16"THK, AS-568-031	1
1.4	92174	WASHER, 1.860 O.D X .690 I.D	1
1.5	92158	DOWEL PIN, 1/8" X 3/8"L	2
1.6	11746/00	ESCUTCHEON, LAV SPOUT, ROND	1
1.7	11427	AERATOR, CACHE REG, PINK 1.2 GPM, M24X1.0, NEOPERL # 40.2360.010	1
1.8	11747/00	SPOUT, HIGH, ROND	1
1.9	10745	THREAD ALL, 3/8"-18 NPSM	1
2	3-584/00	ASSY, BLADE HANDLE, ROND	1
2.1	11749/00	ESCUTCHEON, HANDLE, ROND	1
2.2	11748/00	HANDLE, BLADE, ROND	1
2.3	92005	SET SCREW, CUP PT 6-32 UNC THREAD 3/16"L	1
2.4	92176	WEAR WASHER	2
2.5	92177	RETAINING RING, 7/16" SHAFT	1
3	3-545/00	BRASS PUSH TYPE DRAIN, W/ OVERFLOW & SMALL PLUG	1
4	92492	CAP NUT, 3/8" COMPRESSION	1
5	90014	O-RING, 1/2"ID X 5/8"OD X 1/16"THK, AS-568-014	1
6	92246	HEX KEY 1/16, FOR 6-32 SET SCREW	1
7	2-580	VALVE KIT, FLUSH MOUNT, SINGLE HANDLE LAV	1
7.1	1-054	VALVE, DECK MOUNTED SINGLE HANDLE LAV DROP-IN	1
7.2	11077	SLEEVE MOUNT, DECK (ROMAN) TUB	1
7.3	92180	EXTENSION SLEEVE, WIDESPREAD	1
7.4	92138	BRASS WASHER, THIN	1
7.5	92313	HEX NUT, 1-1/4"-20 THREAD	1

ZONE	REV.	DESCRIPTION	DATE	APPROVED
------	------	-------------	------	----------

REVISIONS

1261 LOGAN AVENUE
COSTA MESA, CALIFORNIA 92626
PHONE: 714.361.4800
FAX: 714.617.3120

PHYLIRICH[®]
Defining Luxury Since 1959

PROPRIETARY AND CONFIDENTIAL
THE INFORMATION CONTAINED IN THIS DRAWING IS THE SOLE PROPERTY OF PHYLIRICH. ANY REPRODUCTION IN PART OR AS A WHOLE WITHOUT THE WRITTEN PERMISSION OF PHYLIRICH IS PROHIBITED.
DO NOT SCALE DRAWING

WIDESPREAD LAV, HIGH SPOUT, SINGLE BLADE HANDLE, ROND

SIZE	ASM/PRT NO.	REV
A	183-06/00	-
SCALE: 1:12	WEIGHT: lbs.	SHEET 1 OF 2