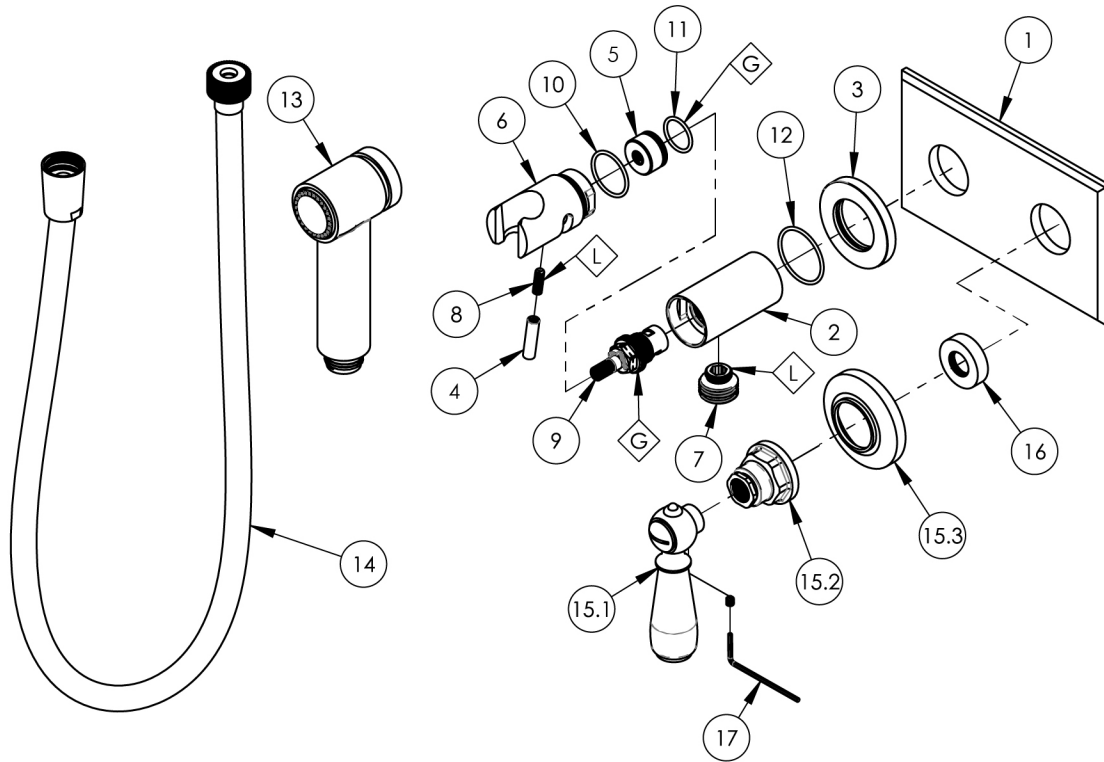


- NOTE(S):  
1. PART NUMBER, "/00" DENOTES PART SHALL HAVE FINISH.  
2. APPLY NSF COMPLIANT GREASE TO ANY O-RING, SEALING JOINTS, AND/OR PIVOTAL POINTS.  
3. APPLY NSF COMPLIANT LOCTITE TO THREADED AREA.  
4. APPLY NSF COMPLIANT REMOVABLE (BLUE) LOCTITE TO THREADED AREA.  
5. SILVER SOLDER JOINTS SHALL BE FULLY WETTED VIA CAPILLARY ACTION AND COMPLETELY NON-POROUS.



| ITEM NO. | PART NUMBER | DESCRIPTION   | QTY. |
|----------|-------------|---|------|
| 1        | 11778/00    | TRIM PLATE, SINGLE HOLE BIDET, TWO HANDLE, DIAMA    | 1    |
| 2        | 10859/00    | BODY, HANDSHOWER HOLDER W/ INTEGRATED VOL. CTRL.    | 1    |
| 3        | 12477/00    | ESCUTCHEON, FLANGE                                  | 1    |
| 4        | 10861/00    | HANDLE, LEVER 10-24 UNC                             | 1    |
| 5        | 10862/00    | HIDDEN HUB, HANDSHOWER VOL. CTRL.                   | 1    |
| 6        | 10863/00    | SHOWER HOOK, INTEGRATED HANDLE                      | 1    |
| 7        | P18011/00   | CONNECTOR OUTLET 1/2"                               | 1    |
| 8        | 92152       | SET SCREW, CUP PT. 10-24 UNC X 5/8"L                | 1    |
| 9        | 10739       | CARTRIDGE, VALVE 3/8"G RIGHT CLOSING                | 1    |
| 10       | 90021       | O-RING, 15/16"ID X 1-1/16"OD X 1/16"THK, AS-568-021 | 1    |
| 11       | 90017       | O-RING, 11/16"ID X 13/16"OD X 1/16"THK, AS-568-017  | 1    |
| 12       | 90025       | O-RING, 1-3/16"ID X 1/16"THK, AS-568-025            | 1    |
| 13       | 3-410/00    | ASSY, HAND SPRAY                                    | 1    |
| 14       | 3-049/00    | ASSY, HOSE KIT, HANDSHOWER                          | 1    |
| 15       | 3-865/00    | LEVER HANDLE, WIDESPREAD/SHOWER                     | 1    |
| 15.1     | 3-859/00    | LEVER HANDLE W/ BROACH                              | 1    |
| 15.2     | 12469/00    | HUB SHORT, CROSS HANDLE, WIDESPREAD LAV             | 1    |
| 15.3     | 12474/00    | ESCUTCHEON, CROSS & LEVER HANDLES                   | 1    |
| 16       | 11087       | SLEEVE FOR PB-THERM PLATE                           | 1    |
| 17       | 92021       | HEX KEY 5/64, FOR 8-32 SET SCREW                    | 1    |

| ZONE | REV. | DESCRIPTION | DATE | APPROVED |
|------|------|-------------|------|----------|
|------|------|-------------|------|----------|

REVISIONS

1261 LOGAN AVENUE  
COSTA MESA, CALIFORNIA 92626  
PHONE: 714.361.4800  
FAX: 714.617.3120

**PHYLIRICH**<sup>®</sup>  
Defining Luxury Since 1959

PROPRIETARY AND CONFIDENTIAL  
THE INFORMATION CONTAINED IN THIS DRAWING  
IS THE SOLE PROPERTY OF PHYLIRICH. ANY  
REPRODUCTION IN PART OR AS A WHOLE  
WITHOUT THE WRITTEN PERMISSION OF PHYLIRICH  
IS PROHIBITED.  
DO NOT SCALE DRAWING

WALL MOUNTED BIDET, LEVER HANDLE

| SIZE        | ASM/PRT NO.  | REV          |
|-------------|--------------|--------------|
| A           | 165-65/00    | -            |
| SCALE: 1:16 | WEIGHT: lbs. | SHEET 1 OF 2 |