

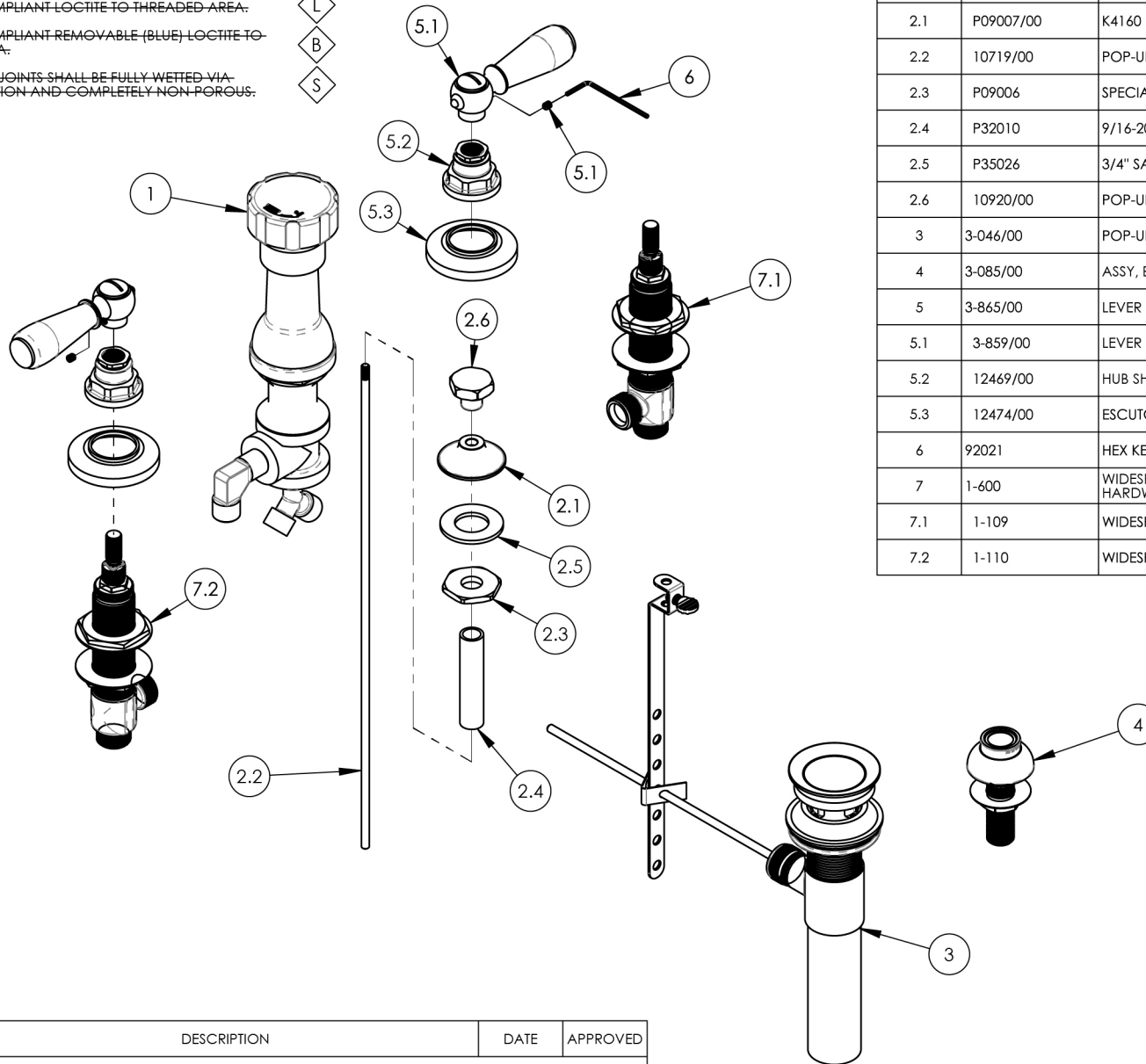
NOTE(S):
1. PART NUMBER, "/00" DENOTES PART SHALL HAVE FINISH.

2. APPLY NSF COMPLIANT GREASE TO ANY O-RING, SEALING JOINTS, AND/OR PIVOTAL POINTS.

3. APPLY NSF COMPLIANT LOCTITE TO THREADED AREA.

4. APPLY NSF COMPLIANT REMOVABLE (BLUE) LOCTITE TO THREADED AREA.

5. SILVER SOLDER JOINTS SHALL BE FULLY WETTED VIA CAPILLARY ACTION AND COMPLETELY NON-POROUS.



| ITEM NO. | PART NUMBER | DESCRIPTION | QTY. |
|----------|-------------|--|------|
| 1 | 3-160/00 | BIDET DIVERTER, COMPLETE | 1 |
| 2 | 3-145/00 | ASSY. BIDET POP-UP ROD, 500/501 SERIES | 1 |
| 2.1 | P09007/00 | K4160 POP UP GUIDE | 1 |
| 2.2 | 10719/00 | POP-UP ROD, 10-24, 14" LONG | 1 |
| 2.3 | P09006 | SPECIAL HEX F/BIDET SPRAYER | 1 |
| 2.4 | P32010 | 9/16-20 x 56 NIPPLE FOR COMPRESSION STEM | 1 |
| 2.5 | P35026 | 3/4" SAE FLAT WASHER | 1 |
| 2.6 | 10920/00 | POP-UP KNOB, HEX TRADITIONAL | 1 |
| 3 | 3-046/00 | POP-UP DRAIN ASSEMBLY (2-101, 2-102, & 2-246) | 1 |
| 4 | 3-085/00 | ASSY, BIDET SPRAYER | 1 |
| 5 | 3-865/00 | LEVER HANDLE, WIDESPREAD/SHOWER | 2 |
| 5.1 | 3-859/00 | LEVER HANDLE W/ BROACH | 1 |
| 5.2 | 12469/00 | HUB SHORT, CROSS HANDLE, WIDESPREAD LAV | 1 |
| 5.3 | 12474/00 | ESCUTCHEON, CROSS & LEVER HANDLES | 1 |
| 6 | 92021 | HEX KEY 5/64, FOR 8-32 SET SCREW | 1 |
| 7 | 1-600 | WIDESPREAD HOT AND COLD VALVES W/MOUNTING HARDWARE | 1 |
| 7.1 | 1-109 | WIDESPREAD VALVE LAV 16PT, COLD W/ MOUNTING | 1 |
| 7.2 | 1-110 | WIDESPREAD VALVE LAV 16PT, HOT W/ MOUNTING | 1 |

| ZONE | REV. | DESCRIPTION | DATE | APPROVED |
|------|------|-------------|------|----------|
|------|------|-------------|------|----------|

REVISIONS

1261 LOGAN AVENUE
COSTA MESA, CALIFORNIA 92626
PHONE: 714.361.4800
FAX: 714.617.3120

PHYLIRICH®
Defining Luxury Since 1959

PROPRIETARY AND CONFIDENTIAL
THE INFORMATION CONTAINED IN THIS DRAWING
IS THE SOLE PROPERTY OF PHYLIRICH. ANY
REPRODUCTION IN PART OR AS A WHOLE
WITHOUT THE WRITTEN PERMISSION OF PHYLIRICH
IS PROHIBITED.
DO NOT SCALE DRAWING

FOUR HOLE BIDET SET, LEVER HANDLES

| SIZE | ASM/PRT NO. | REV |
|-------------|--------------|--------------|
| A | 165-61/00 | - |
| SCALE: 1:12 | WEIGHT: lbs. | SHEET 1 OF 2 |