

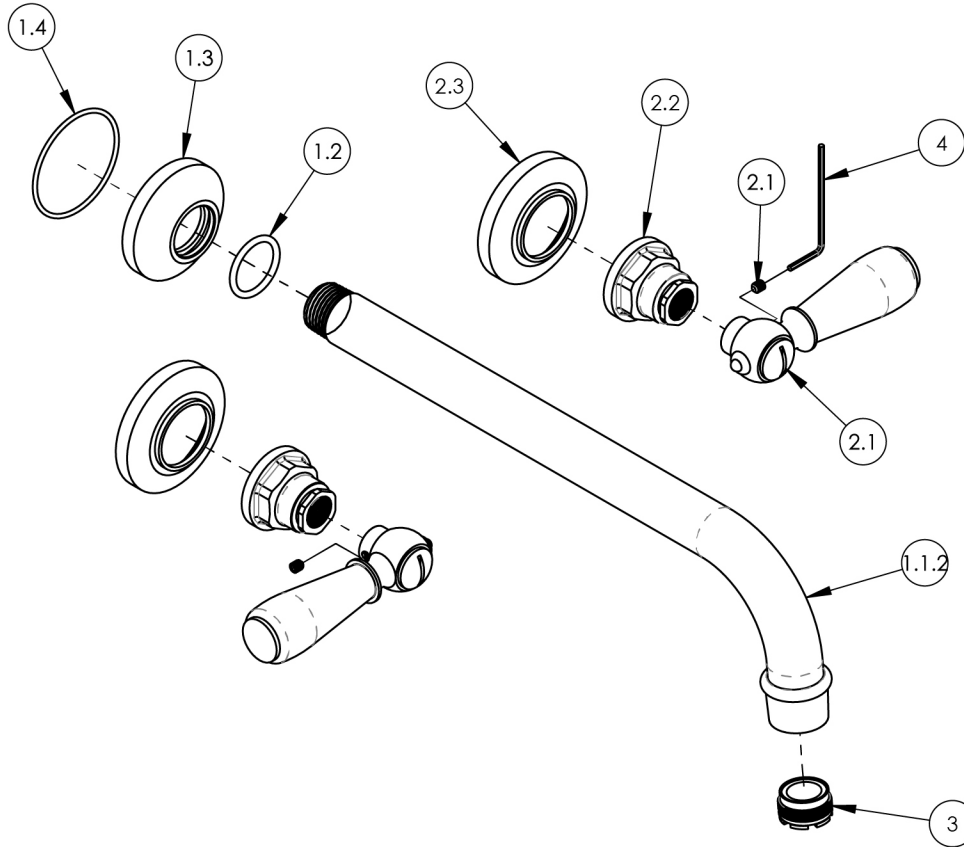
NOTE(S):
1. PART NUMBER, "/00" DENOTES PART SHALL HAVE FINISH.

2. APPLY NSF COMPLIANT GREASE TO ANY O-RING, SEALING JOINTS, AND/OR PIVOTAL POINTS.

3. APPLY NSF COMPLIANT LOCTITE TO THREADED AREA.

4. APPLY NSF COMPLIANT REMOVABLE (BLUE) LOCTITE TO THREADED AREA.

5. SILVER SOLDER JOINTS SHALL BE FULLY WETTED VIA CAPILLARY ACTION AND COMPLETELY NON-POROUS.



| ITEM NO. | PART NUMBER | DESCRIPTION | QTY. |
|----------|-------------|---|------|
| 1 | 3-870/00 | WALL LAV/TUB SPOUT, 10" L | 1 |
| 1.1 | 2-377/00 | WALL SPOUT, 10", BRAZE, HEX MODERN | 1 |
| 1.1.1 | 11563/00 | AERATOR HOUSING, TRANS. HEX MODERN ADDITION | 1 |
| 1.1.2 | 12160/00 | SPOUT, WALL LAV/ RT, 10", HEX MODERN | 1 |
| 1.2 | 90118 | O-RING, 7/8"ID X 1-1/16"OD X 3/32"THK, AS-568-118 | 1 |
| 1.3 | 12476/00 | SPOUT FLANGE, WALL TUB | 1 |
| 1.4 | 90031 | O-RING, 1-3/4"ID X 1/16"THK, AS-568-031 | 1 |
| 2 | 3-865/00 | LEVER HANDLE, WIDESPREAD/SHOWER | 2 |
| 2.1 | 3-859/00 | LEVER HANDLE W/ BROACH | 1 |
| 2.2 | 12469/00 | HUB SHORT, CROSS HANDLE, WIDESPREAD LAV | 1 |
| 2.3 | 12474/00 | ESCUTCHEON, CROSS & LEVER HANDLES | 1 |
| 3 | P05024 | AERATOR CACHE COIN SLOT, M21.5X1.0 FULL FLOW | 1 |
| 4 | 92021 | HEX KEY 5/64, FOR 8-32 SET SCREW | 1 |

| ZONE | REV. | DESCRIPTION | DATE | APPROVED |
|------|------|-------------|------|----------|
|------|------|-------------|------|----------|

REVISIONS

1261 LOGAN AVENUE
COSTA MESA, CALIFORNIA 92626
PHONE: 714.361.4800
FAX: 714.617.3120

PHYLIRICH
Defining Luxury Since 1959

PROPRIETARY AND CONFIDENTIAL
THE INFORMATION CONTAINED IN THIS DRAWING
IS THE SOLE PROPERTY OF PHYLIRICH. ANY
REPRODUCTION IN PART OR AS A WHOLE
WITHOUT THE WRITTEN PERMISSION OF PHYLIRICH
IS PROHIBITED.
DO NOT SCALE DRAWING

WALL TUB SET, TUBE SPOUT 10", LEVER
HANDLES

| SIZE | ASM/PRT NO. | REV |
|------------|--------------|--------------|
| A | 165-57-10/00 | - |
| SCALE: 1:8 | WEIGHT: lbs. | SHEET 1 OF 2 |