

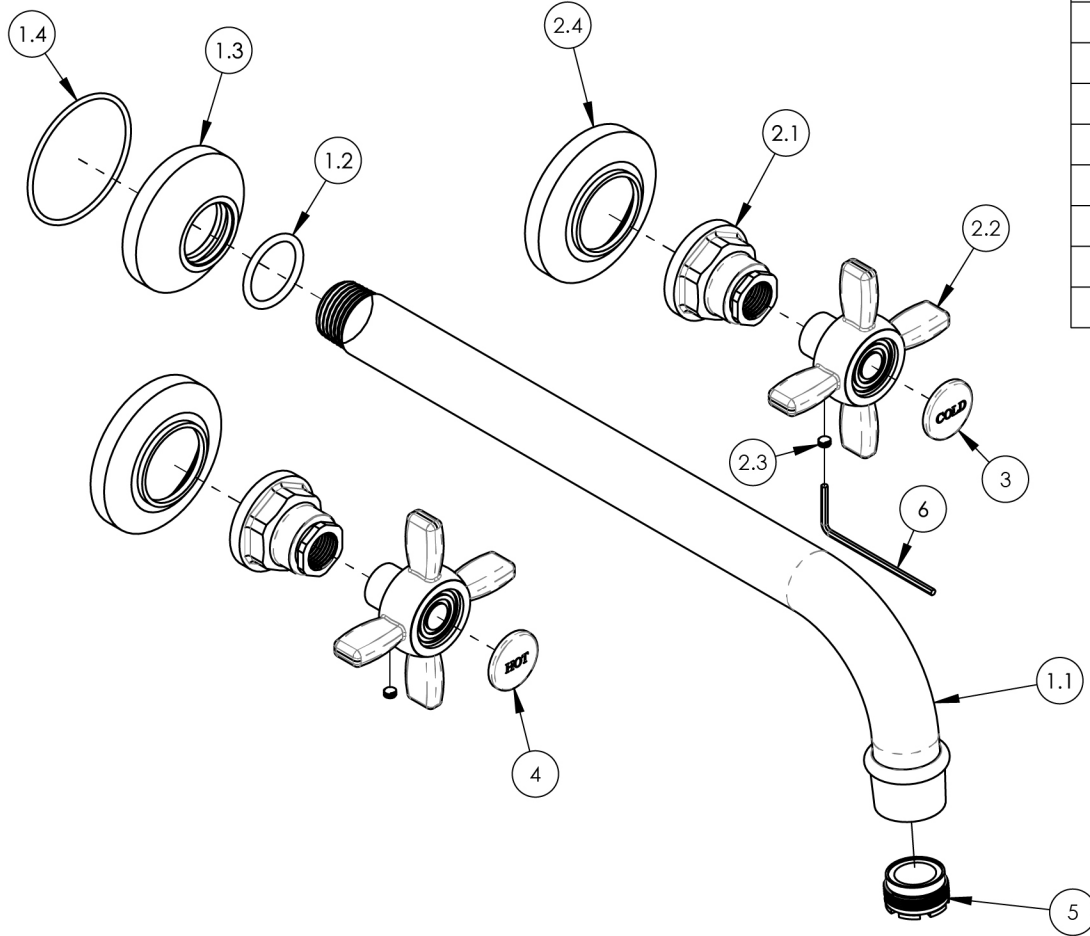
NOTE(S):
 1. PART NUMBER, "/00" DENOTES PART SHALL HAVE FINISH.

2. APPLY NSF COMPLIANT GREASE TO ANY O-RING, SEALING JOINTS, AND/OR PIVOTAL POINTS.

3. APPLY NSF COMPLIANT LOCTITE TO THREADED AREA.

4. APPLY NSF COMPLIANT REMOVABLE (BLUE) LOCTITE TO THREADED AREA.

5. SILVER SOLDER JOINTS SHALL BE FULLY WETTED VIA CAPILLARY ACTION AND COMPLETELY NON-POROUS.



ITEM NO.	PART NUMBER	DESCRIPTION	QTY.
1	3-870/00	WALL LAV/TUB SPOUT, 10" L	1
1.1	2-377/00	WALL SPOUT, 10", BRAZE, HEX MODERN	1
1.2	90118	O-RING, 7/8"ID X 1-1/16"OD X 3/32"THK, AS-568-118	1
1.3	12476/00	SPOUT FLANGE, WALL TUB	1
1.4	90031	O-RING, 1-3/4"ID X 1/16"THK, AS-568-031	1
2	3-863/00	CROSS HANDLE, WIDESPREAD/SHOWER	2
2.1	12469/00	HUB SHORT, CROSS HANDLE, WIDESPREAD LAV	1
2.2	30608/00	LAV CROSS HANDLE, FORGED, 16TH ST	1
2.3	92163	SET SCREW, CUP PT 8-32 X 1/8"L	1
2.4	12474/00	ESCUTCHEON, CROSS & LEVER HANDLES	1
3	11098	PLASTIC BUTTON, COLD	1
4	11099	PLASTIC BUTTON, HOT	1
5	P05024	AERATOR CACHE COIN SLOT, M21.5X1.0 FULL FLOW	1
6	92021	HEX KEY 5/64, FOR 8-32 SET SCREW	1

ZONE	REV.	DESCRIPTION	DATE	APPROVED
------	------	-------------	------	----------

REVISIONS

1261 LOGAN AVENUE
 COSTA MESA, CALIFORNIA 92626
 PHONE: 714.361.4800
 FAX: 714.617.3120

PHYLIRICH[®]
 Defining Luxury Since 1959

PROPRIETARY AND CONFIDENTIAL
 THE INFORMATION CONTAINED IN THIS DRAWING IS THE SOLE PROPERTY OF PHYLIRICH. ANY REPRODUCTION IN PART OR AS A WHOLE WITHOUT THE WRITTEN PERMISSION OF PHYLIRICH IS PROHIBITED.
 DO NOT SCALE DRAWING

WALL TUB SET, TUBE SPOUT 10", CROSS HANDLES

SIZE A	ASM/PRT NO. 165-56-10/00	REV -
SCALE: 1:8	WEIGHT: lbs.	SHEET 1 OF 2