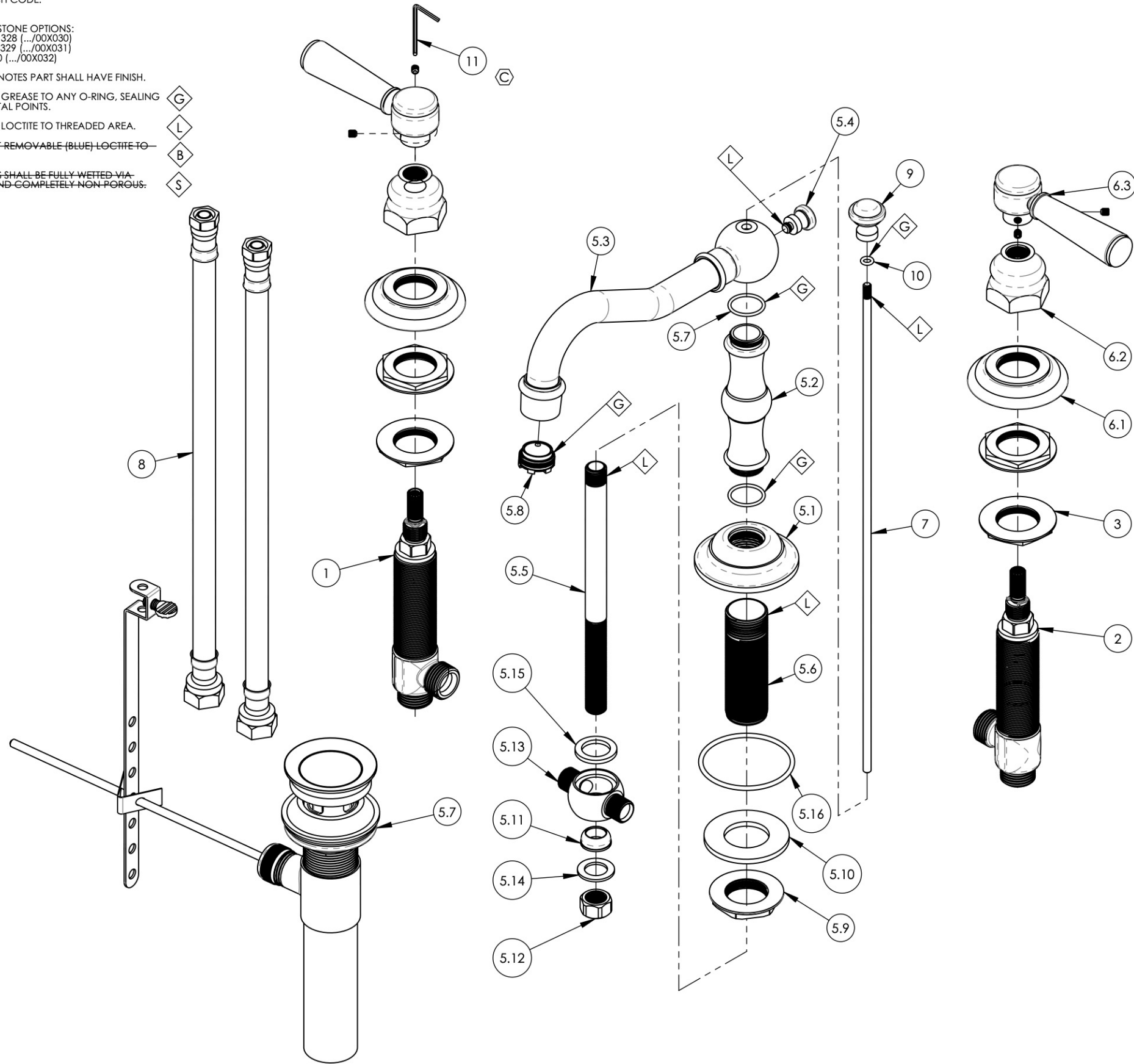


- NOTE(S):
- EXAMPLE OF SPLIT FINISH CODE:  
A. 161-03/026X030
  - LEVER HANDLE INSERT STONE OPTIONS:  
A. BLACK MARBLE = 11328 (.../00X030)  
B. WHITE MARBLE = 11329 (.../00X031)  
C. SOAPSTONE = 11330 (.../00X032)
  - PART NUMBER, "/00" DENOTES PART SHALL HAVE FINISH.
  - APPLY NSF COMPLIANT GREASE TO ANY O-RING, SEALING JOINTS, AND/OR PIVOTAL POINTS.
  - APPLY NSF COMPLIANT LOCTITE TO THREADED AREA.
  - APPLY NSF COMPLIANT REMOVABLE (BLUE) LOCTITE TO THREADED AREA.
  - SILVER SOLDER JOINTS SHALL BE FULLY WETTED VIA CAPILLARY ACTION AND COMPLETELY NON-POROUS.

G  
L  
B  
S



ITEM NO.	PART NUMBER	DESCRIPTION	QTY.
1	1-149	WIDESPREAD VALVE LAV 16PT, HOT, ONLY	1
2	1-150	WIDESPREAD VALVE LAV 16PT, COLD, ONLY	1
3	2-203	MOUNTING NUT KIT, WIDESPREAD LAV	4
5.7	3-046/00	POP-UP DRAIN ASSEMBLY (2-101, 2-102, & 2-246)	1
5	3-324/00	SPOUT WIDESPREAD LAV, HENRI/MAISON SERIES	1
5.1	11148/00	ESCUTCHEON, BASE SPOUT RISER	1
5.2	11149/00	RISER FOR SPOUT, TRADITIONAL	1
5.3	2-040/00	SPOUT REACH BRAZED, HENRI SERIES	1
5.4	11152/00	FINIAL END BACK, TRADITIONAL	1
5.5	P33002	7" POP-UP GUIDE	1
5.6	P33008	LAV SPOUT NIPPLE	1
5.7	90018	O-RING, 3/4"ID X 1/16"THK, AS-568-018	2
5.8	11429	AERATOR CACHE JR, 1.2GPM, M21.5X1.0, 42.2260.450	1
5.9	92037	NUT, FLANGED 1"-20 THREAD	1
5.10	P35317	S.S. WASHER O.D 2" I.D 1" 1/16	1
5.11	954A	CONE WASHER	1
5.12	168B	NUT FOR 3-WAY TEE	1
5.13	2003NL	TEE VALVE FOR LAV WIDESPREAD	1
5.14	28A	BRASS WASHER	1
5.15	427	FIBER WASHER, 0.983" x 0.680" x 0.100" THK	1
5.16	90137	O-RING, 2-1/16"ID X 3/32"THK., AS-568-137	1
6	3-429/00	MARBLE LEVER HANDLE, HEX TRADITIONAL	2
6.1	10619/00	ESCUTCHEON, TRADITIONAL LAV 1"-20	1
6.2	10621/00	BASE HUB NUT	1
6.3	2-142/00	MARBLE LEVER HANDLE, 500 SERIES, HEX TRADITIONAL	1
7	10719/00	POP-UP ROD, 10-24, 14" LONG	1
8	10982	HOSE, 3/8" COMP. X 1/2" NPSM - 12"L	2
9	11153/00	POP-UP KNOB, TRADITIONAL	1
10	90008	O-RING, 3/16"ID X 5/16"OD X 1/16"THK, AS-568-008	1
11	92021	HEX KEY 5/64, FOR 8-32 SET SCREW	1

E6	C	UPDATE HEX KEY PART #	4/20/2021	AMM
ZONE	REV.	DESCRIPTION	DATE	APPROVED
REVISIONS				

1261 LOGAN AVENUE  
COSTA MESA, CALIFORNIA 92626  
PHONE: 714.361.4800  
FAX: 714.617.3120

**PHYLIRICH**  
Defining Luxury Since 1959

**PROPRIETARY AND CONFIDENTIAL**  
THE INFORMATION CONTAINED IN THIS DRAWING IS THE SOLE PROPERTY OF PHYLIRICH. ANY REPRODUCTION IN PART OR AS A WHOLE WITHOUT THE WRITTEN PERMISSION OF PHYLIRICH IS PROHIBITED.  
**DO NOT SCALE DRAWING**

**WIDESPREAD FAUCET, MARBLE LEVER HANDLE, HENRI**

SIZE	ASM/PRT NO.	REV
<b>B</b>	161-03/00	<b>C</b>
SCALE: 1:2.75	WEIGHT: lbs.	SHEET 1 OF 2