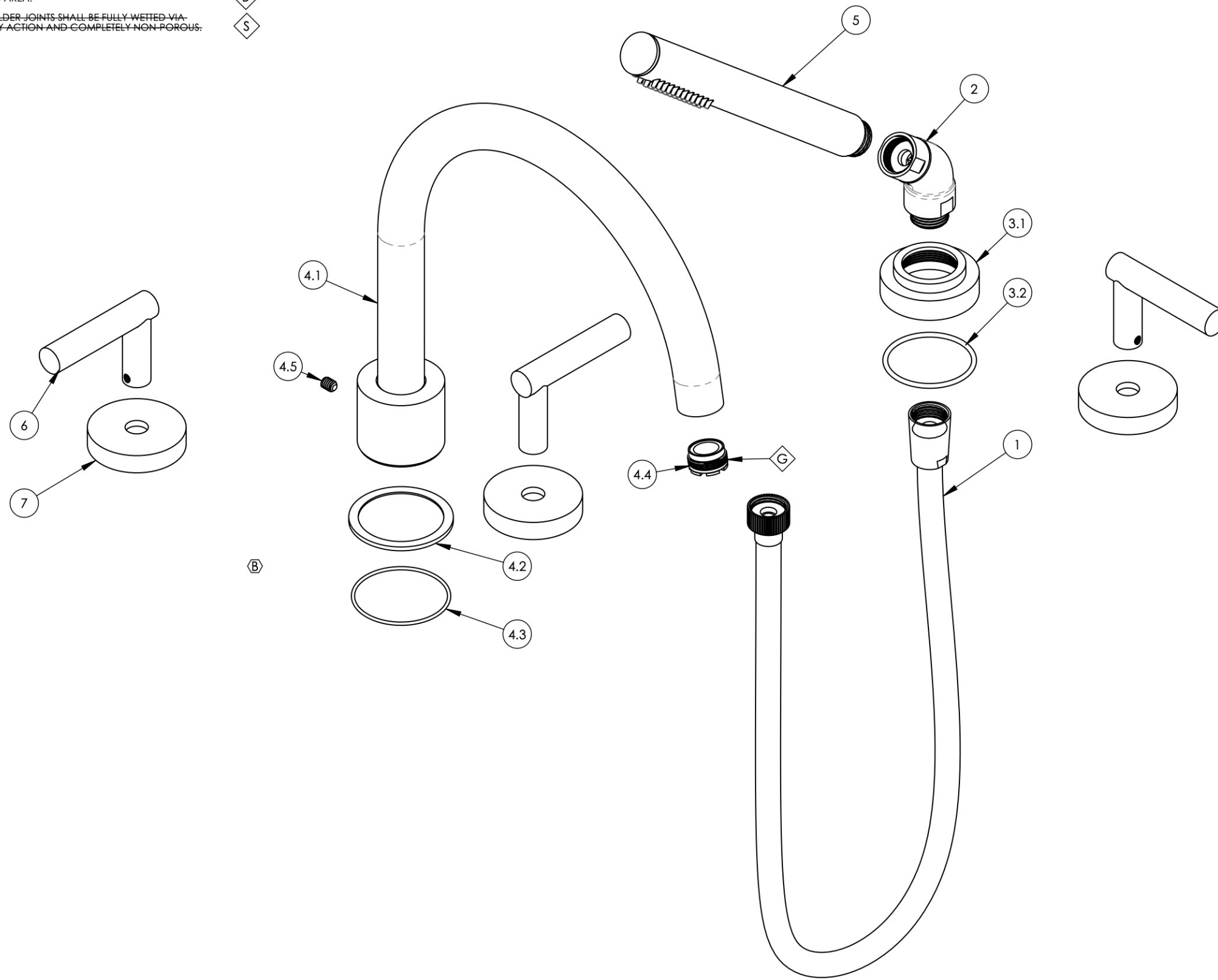


- NOTE(S):
 1. PART NUMBER, "/00" DENOTES PART SHALL HAVE FINISH.
 2. APPLY NSF COMPLIANT GREASE TO ANY O-RING, SEALING JOINTS, AND/OR PIVOTAL POINTS. G
 3. APPLY NSF COMPLIANT LOCTITE TO THREADED AREA. L
 4. APPLY NSF COMPLIANT REMOVABLE (BLUE) LOCTITE TO THREADED AREA. B
 5. SILVER SOLDER JOINTS SHALL BE FULLY WETTED VIA CAPILLARY ACTION AND COMPLETELY NON-POROUS. S

ITEM NO.	PART NUMBER	DESCRIPTION	QTY.
1	3-049/00	ASSY, HOSE KIT, HANDSHOWER	1
2	3-050/00	ELBOW ASSEMBLY	1
3	3-211/00	ESCUTCHEON BASE, HANDSHOWER, BASIC	1
3.1	P18030/00	ESCUTCHEON BASE, DECK TUB, HANDSHOWER, BASIC	1
3.2	90133	1 3/4" O-RING, 1-13/16 ID X 3/32 THK, AS-568-133	1
4	3-394/00	ASSY, HIGH ARC TUB SPOUT, DECK TUB BASIC II	1
4.1	2-128/00	SUB ASSY, HIGH ARC TUB SPOUT, DECK TUB BASIC II	1
4.2	11186/00	BASE FLANGE, BASIC II	1
4.3	90033	O-RING, 2" ID X 2-1/8" OD X 1/16" THK, AS-568-033	1
4.4	P05024	AERATOR CACHE COIN SLOT, M21.5X1.0 FULL FLOW	1
4.5	92127	SET SCREW, CUP PT, 1/4"-20 X 5/16" L, SS	1
5	3-471/00	ASSY, ROUND HANDSHOWER, CONTEMPORARY	1
6	3-581/00	HANDLE LEVER W/ SET SCREW, TRANSITION	3
7	3-590/00	ESCUTCHEON W/ SET SCREW, TRANSITION	3



E4, B7	B	UPDATE HAND SHOWER ASSEMBLY, WEAR WASHER REMOVED	10/13/2020	AMM
ZONE	REV.	DESCRIPTION	DATE	APPROVED
REVISIONS				

1261 LOGAN AVENUE
 COSTA MESA, CALIFORNIA 92626
 PHONE: 714.361.4800
 FAX: 714.617.3120

PHYLIRICH[®]
 Defining Luxury Since 1959

PROPRIETARY AND CONFIDENTIAL
 THE INFORMATION CONTAINED IN THIS DRAWING IS THE SOLE PROPERTY OF PHYLIRICH. ANY REPRODUCTION IN PART OR AS A WHOLE WITHOUT THE WRITTEN PERMISSION OF PHYLIRICH IS PROHIBITED.
DO NOT SCALE DRAWING

DECK TUB W/ HANDSHOWER, LEVER HANDLES, TRANSITION

SIZE B	ASM/PRT NO. 120-49/00	REV B
SCALE: 1:2.5	WEIGHT: lbs.	SHEET 1 OF 2