

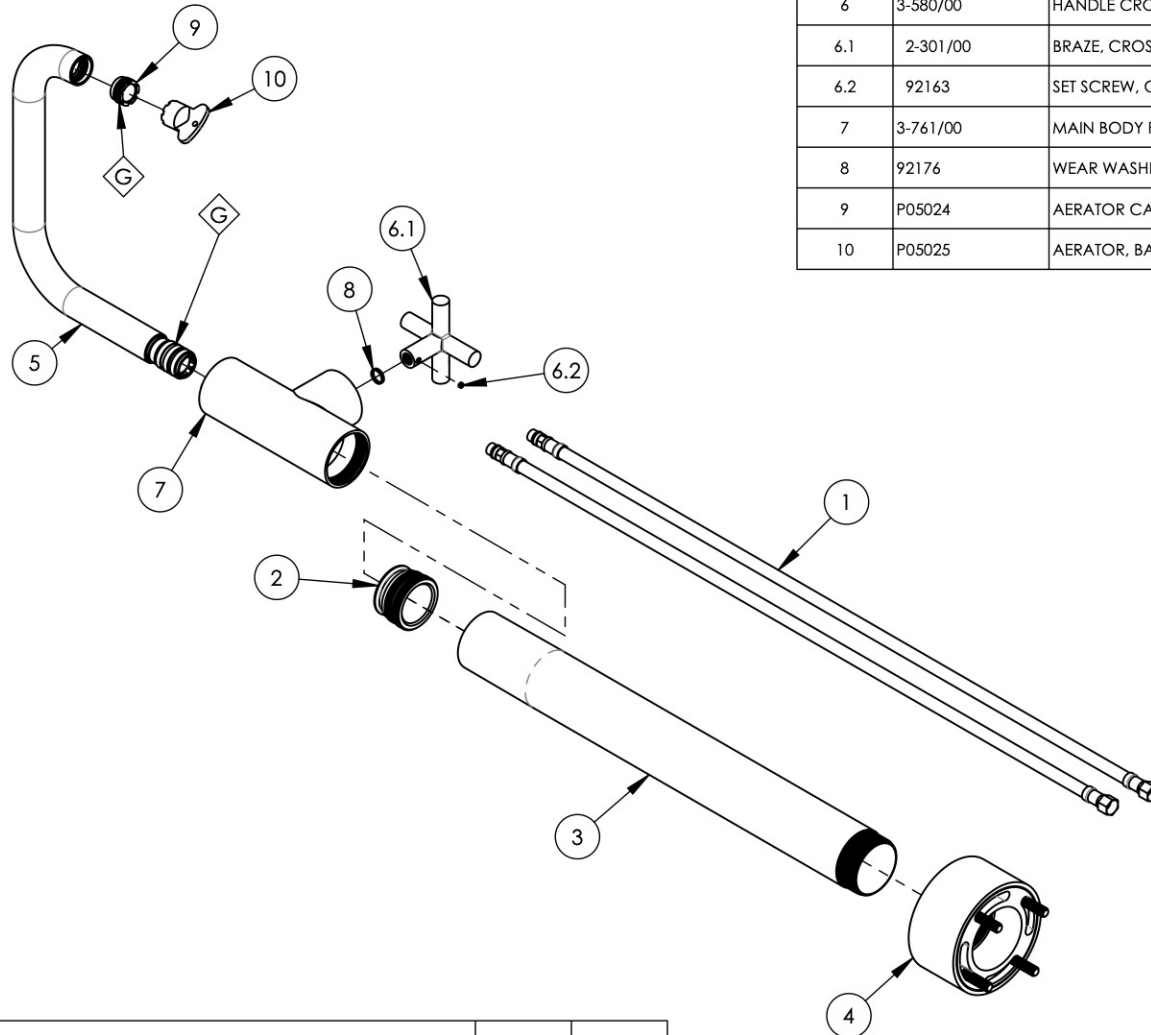
NOTE(S):  
1. PART NUMBER, "/00" DENOTES PART SHALL HAVE FINISH.

2. APPLY NSF COMPLIANT GREASE TO ANY O-RING, SEALING JOINTS, AND/OR PIVOTAL POINTS.

3. APPLY NSF COMPLIANT LOCTITE TO THREADED AREA:

4. APPLY NSF COMPLIANT REMOVABLE (BLUE) LOCTITE TO THREADED AREA:

5. SILVER SOLDER JOINTS SHALL BE FULLY WETTED VIA CAPILLARY ACTION AND COMPLETELY NON-POROUS:



ITEM NO.	PART NUMBER	DESCRIPTION	QTY.
1	11366	HOSE, SUPPLY, FREE STANDING TUB FILLER	2
2	11367	CONNECTOR, BODY TO RISER	1
3	12189/00	RISER, SUPPLY TUBE, SHORT	1
4	3-504/00	ASSY, RISER & BASE, FLOOR MOUNT TUB FILLER	1
5	3-506/00	ASSY, FLAT/LOW SQUARE SPOUT, FLOOR MOUNT TUB FILLER	1
6	3-580/00	HANDLE CROSS W/ SET SCREW, TRANSITION	1
6.1	2-301/00	BRAZE, CROSS HANDLE, HUB	1
6.2	92163	SET SCREW, CUP PT 8-32 X 1/8"L	1
7	3-761/00	MAIN BODY FLOOR MOUNT TUB FILLER, LESS HOOK	1
8	92176	WEAR WASHER	1
9	P05024	AERATOR CACHE COIN SLOT, M21.5X1.0 FULL FLOW	1
10	P05025	AERATOR, BASIC KEY, PLASTIC RED	1

ZONE	REV.	DESCRIPTION	DATE	APPROVED
------	------	-------------	------	----------

REVISIONS

1261 LOGAN AVENUE  
COSTA MESA, CALIFORNIA 92626  
PHONE: 714.361.4800  
FAX: 714.617.3120

**PHYLIRICH**<sup>®</sup>  
Defining Luxury Since 1959

**PROPRIETARY AND CONFIDENTIAL**  
THE INFORMATION CONTAINED IN THIS DRAWING IS THE SOLE PROPERTY OF PHYLIRICH. ANY REPRODUCTION IN PART OR AS A WHOLE WITHOUT THE WRITTEN PERMISSION OF PHYLIRICH IS PROHIBITED.  
**DO NOT SCALE DRAWING**

**FLOOR MOUNT TUB FILLER, SINGLE HOLE SHORT, LOW SPOUT W/ CROSS, TRANSITION**

SIZE <b>A</b>	ASM/PRT NO. 120-46-04/00	REV -
------------------	-----------------------------	----------

SCALE: 1:6      WEIGHT: lbs.      SHEET 1 OF 2