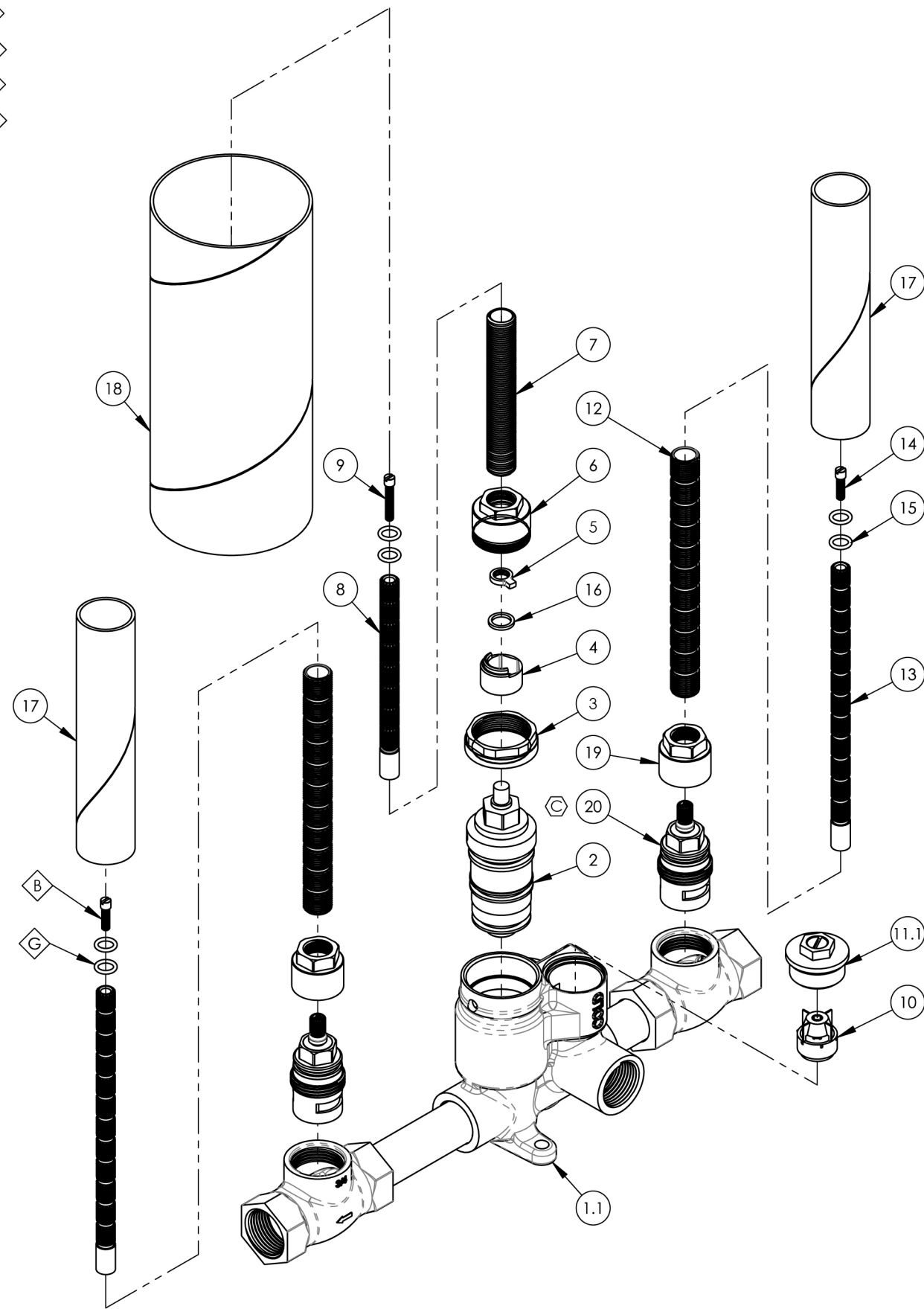


- NOTE(S):
- PART NUMBER, "/00" DENOTES PART SHALL HAVE FINISH.
  - APPLY NSF COMPLIANT GREASE TO ANY O-RING, SEALING JOINTS, AND/OR PIVOTAL POINTS.
  - APPLY NSF COMPLIANT LOCTITE TO THREADED AREA.
  - APPLY NSF COMPLIANT REMOVABLE (BLUE) LOCTITE TO THREADED AREA.
  - SILVER SOLDER JOINTS SHALL BE FULLY WETTED VIA CAPILLARY ACTION AND COMPLETELY NON POROUS.

- G
- L
- B
- S



ITEM NO.	PART NUMBER	DESCRIPTION	QTY.
1	2-260	MEDITHERM W/ 2 VOLUME CONTROL	1
1.1	11587	VALVE BODY, MEDI-THERMOSTATIC, 3/4"	1
1.2	11586	BODY, SHUTOFF 3/4" FEMALE	2
1.3	11611	COPPER TUBE, 3/4" X 2.25 L, SWEAT	1
1.4	11613	COPPER TUBE, 3/4" X 3.5 L, SWEAT	1
2	11583	CARTRIDGE, THERMOSTAR 3/4" S25, TYPE2	1
3	11599	RETAINER NUT FOR MEDI THERM CARTRIDGE	1
4	11598	CARTRIDGE LIMIT STOP SLEEVE, MEDI THERM	1
5	11320	SAFETY AND MECHANICAL STOP, MINI THERM	1
6	11610	MEDITHERM NUT FOR ALL THREAD	1
7	10209	SHANK, NIPPLE THREAD ALL 9/16"-20UN WITH .433"ID	1
8	10054	STEM EXTENSION, 6" LONG 20PT INT. TO 16PT LONG EXT. BROACH	1
9	92335	SCREW, FLAT HEAD, M4X0.7 - 1" OVERALL LENGTH	1
10	11593	CHECK VALVE, MEDI-THERMOSTATIC 3/4"	2
11	2-256	SUB ASSY, CHECK VALVE, MEDI THERM 3/4"	2
11.1	11591	NUT, SHUTOFF MEDITHERM	1
11.2	11592	SCREW PIN, MEDI- THERMOSTATIC	1
11.3	90010	O-RING, METRIC, 6 MM ID X 1.78MM THK	1
11.4	98317A217	RETAINING RING, FOR METRIC 6-8MM SHAFT, 10.85MM OD	1
11.5	90571	O-RING, METRIC, 25.1 MM ID X 1.78MM THK	1
12	11498	ALL THREAD, EXTENSION, 9/16"-20, 5-9/16"L, XXL	2
13	11416	STEM EXTENSION, 20PT TO 16PT, XXL	2
14	92157	SCREW, SMALL HD M4X0.7 - 1/2"L	2
15	90011	O-RING, 5/16"ID X 1/16"THK, AS-568-011	6
16	92050	WASHER ACETAL 0.060 THK	1
17	11648	MUD GUARD, CARDBOARD, LONG	2
18	12274	MUD GUARD, CARDBOARD, MEDI THERM, 3-1/8" OD X 7-1/4" LENGTH	1
19	11321	CARTRIDGE RETAINER NUT	2
20	11542	CARTRIDGE, 1/2" 20PT, COLD, HI-TRQ LLL, EXACTO	2

ALL	C	UPDATED COMPONENT	2/18/2025	VA
ZONE	REV.	DESCRIPTION	DATE	APPROVED
REVISIONS				

1261 LOGAN AVENUE  
COSTA MESA, CALIFORNIA 92626  
PHONE: 714.361.4800  
FAX: 714.617.3120

**PHYLIRICH**<sup>®</sup>  
Defining Luxury Since 1959

PROPRIETARY AND CONFIDENTIAL  
THE INFORMATION CONTAINED IN THIS DRAWING IS THE SOLE PROPERTY OF PHYLIRICH. ANY REPRODUCTION IN PART OR AS A WHOLE WITHOUT THE WRITTEN PERMISSION OF PHYLIRICH IS PROHIBITED.  
DO NOT SCALE DRAWING

ASSY, 3/4" MEDI-THERMOSTATIC WITH TWO VOL CTRL, 5" C2C

SIZE	ASM/PRT NO.	REV
<b>B</b>	1-148	<b>D</b>
SCALE: 1:2.75	WEIGHT: lbs.	SHEET 1 OF 2