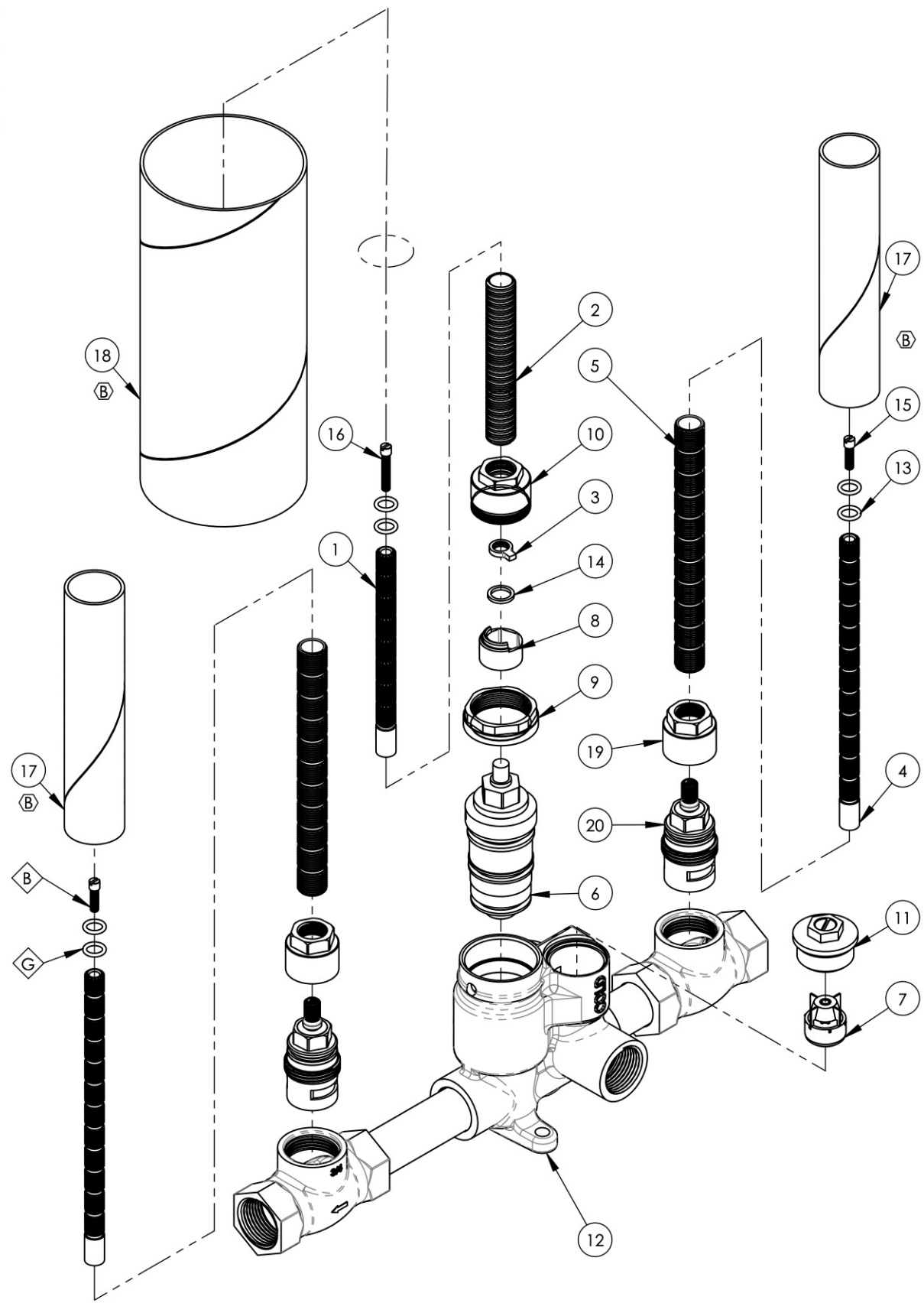


- NOTE(S):
1. PART NUMBER, "/00" DENOTES PART SHALL HAVE FINISH.
 2. APPLY NSF COMPLIANT GREASE TO ANY O-RING, SEALING JOINTS, AND/OR PIVOTAL POINTS.
 3. APPLY NSF COMPLIANT LOCTITE TO THREADED AREA.
 4. APPLY NSF COMPLIANT REMOVABLE (BLUE) LOCTITE TO THREADED AREA.
 5. SILVER SOLDER JOINTS SHALL BE FULLY WETTED VIA CAPILLARY ACTION AND COMPLETELY NON-POROUS.

- G
- L
- B
- S



ITEM NO.	PART NO.	DESCRIPTION	QTY.
1	10054	STEM EXTENSION, 6" LONG 20PT INT. TO 16PT LONG EXT. BROACH	1
2	10209	SHANK, NIPPLE THREAD ALL 9/16"-20UN WITH .433"ID	1
3	11320	SAFETY AND MECHANICAL STOP, MINI THERM	1
4	11416	STEM EXTENSION, 20PT TO 16PT, XXL	2
5	11498	ALL THREAD, EXTENSION, 9/16"-20, 5-9/16"L, XXL	2
6	11583	CARTRIDGE, THERMOSTAR 3/4" S25, TYPE2	1
7	11593	CHECK VALVE, MEDI-THERMOSTATIC 3/4"	2
8	11598	CARTRIDGE LIMIT STOP SLEEVE, MEDI THERM	1
9	11599	RETAINER NUT FOR MEDI THERM CARTRIDGE	1
10	11610	MEDITHERM NUT FOR ALL THREAD	1
11	2-256	SUB ASSY, CHECK VALVE, MEDI THERM 3/4"	2
12	2-260	MEDITHERM W/ 2 VOLUME CONTROL	1
	11587	VALVE BODY, MEDI-THERMOSTATIC, 3/4"	1
	11586	BODY, SHUTOFF 3/4" FEMALE	2
	11611	COPPER TUBE, 3/4" X 2.25 L, SWEAT	1
	11613	COPPER TUBE, 3/4" X 3.5 L, SWEAT	1
13	90011	O-RING, 5/16"ID X 1/16"THK, AS-568-011	6
14	92050	WASHER ACETAL 0.060 THK	1
15	92157	SCREW, SMALL HD M4X0.7 - 1/2"L	2
16	92335	SCREW, FLAT HEAD, M4X0.7 - 1" OVERALL LENGTH	1
17	11648	MUD GUARD, CARDBOARD, LONG	2
18	12274	MUD GUARD, CARDBOARD, MEDI THERM, 3-1/8" OD X 7-1/4" LENGTH	1
19	11321	CARTRIDGE RETAINER NUT	2
20	11542	CARTRIDGE, 1/2" 20PT, HOT, HI-TRQ LLL, EXACTO	2

C7, D4, D7	B	DESCRIPTION	DATE	APPROVED
		UPDATED MUD GUARDS	1/26/2023	LFV
REVISIONS				

1261 LOGAN AVENUE
COSTA MESA, CALIFORNIA 92626
PHONE: 714.361.4800
FAX: 714.617.3120

PHYLIRICH[®]
Defining Luxury Since 1959

PROPRIETARY AND CONFIDENTIAL
THE INFORMATION CONTAINED IN THIS DRAWING IS THE SOLE PROPERTY OF PHYLIRICH. ANY REPRODUCTION IN PART OR AS A WHOLE WITHOUT THE WRITTEN PERMISSION OF PHYLIRICH IS PROHIBITED.
DO NOT SCALE DRAWING

ASSY, 3/4" MEDI-THERMOSTATIC WITH TWO VOL CTRL, 5" C2C

SIZE B	ASM/PRT NO. 1-148	REV C
SCALE: 1:2.75	WEIGHT: lbs.	SHEET 1 OF 2