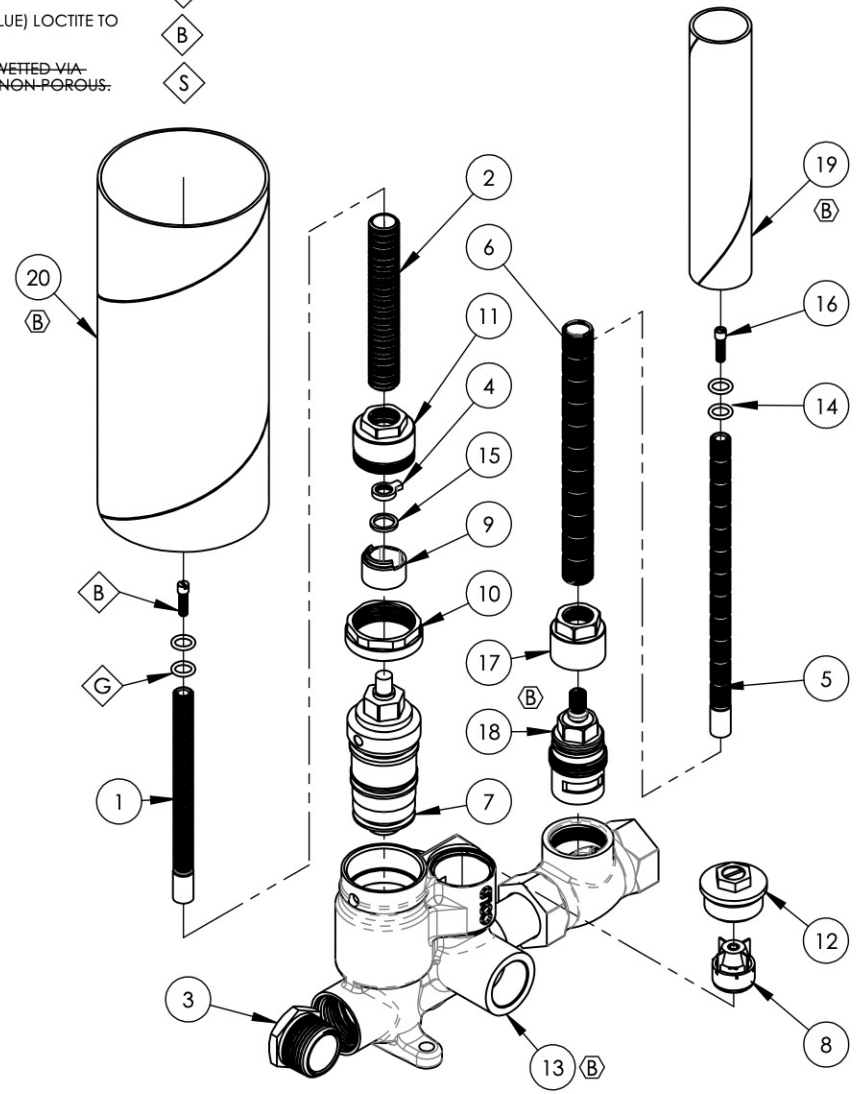


- NOTE(S):
- PART NUMBER, "/00" DENOTES PART SHALL HAVE FINISH.
  - APPLY NSF COMPLIANT GREASE TO ANY O-RING, SEALING JOINTS, AND/OR PIVOTAL POINTS.
  - APPLY NSF COMPLIANT LOCTITE TO THREADED AREA.
  - APPLY NSF COMPLIANT REMOVABLE (BLUE) LOCTITE TO THREADED AREA.
  - SILVER SOLDER JOINTS SHALL BE FULLY WETTED VIA CAPILLARY ACTION AND COMPLETELY NON-POROUS.

- G
- L
- B
- S



ITEM NO.	PART NUMBER	DESCRIPTION	QTY.
1	10054	STEM EXTENSION, 6" LONG 20PT INT. TO 16PT LONG EXT. BROACH	1
2	10209	SHANK, NIPPLE THREAD ALL 9/16"-20UN WITH .433"ID	1
3	10668	PLUG 3/4" NPT	1
4	11320	SAFETY AND MECHANICAL STOP, MINI THERM	1
5	11416	STEM EXTENSION, 20PT TO 16PT, XXL	1
6	11498	ALL THREAD, EXTENSION, 9/16"-20, 5-9/16"L, XXL	1
7	11583	CARTRIDGE, THERMOSTAR 3/4" S25, TYPE2	1
8	11593	CHECK VALVE, MEDI-THERMOSTATIC 3/4"	2
9	11598	CARTRIDGE LIMIT STOP SLEEVE, MEDI THERM	1
10	11599	RETAINER NUT FOR MEDI THERM CARTRIDGE	1
11	11610	MEDITHERM NUT FOR ALL THREAD	1
12	2-256	SUB ASSY, CHECK VALVE, MEDI THERM 3/4"	2
13	2-259	3/4" MEDITHERM W/ VOLUME CTRL, 5" C-C	1
	11677	VALVE BODY, MEDI-THERM 3/4" SWEAT & NPT OUTLET	1
	11586	BODY, SHUTOFF 3/4" FEMALE	1
	11611	COPPER TUBE, 3/4" X 2.25 L, SWEAT	1
14	90011	O-RING, 5/16"ID X 1/16"THK, AS-568-011	4
15	92050	WASHER ACETAL 0.060 THK	1
16	92157	SCREW, SMALL HD M4X0.7 - 1/2"L	2
17	11321	CARTRIDGE RETAINER NUT	1
18	11542	CARTRIDGE, 1/2" 20PT, HOT, HI-TRQ LLL, EXACTO	1
19	11648	MUD GUARD, CARDBOARD, LONG	1
20	12274	MUD GUARD, CARDBOARD, MEDI THERM, 3-1/8" OD X 7-1/4" LENGTH	1

ALL	B	UPDATED VALVE BODY, CARTRIDGE & CAP, MUD GUARDS	1/25/2023	LFV
ZONE	REV.	DESCRIPTION	DATE	APPROVED
REVISIONS				

1261 LOGAN AVENUE  
COSTA MESA, CALIFORNIA 92626  
PHONE: 714.361.4800  
FAX: 714.617.3120



**PROPRIETARY AND CONFIDENTIAL**  
THE INFORMATION CONTAINED IN THIS DRAWING IS THE SOLE PROPERTY OF PHYLRICH. ANY REPRODUCTION IN PART OR AS A WHOLE WITHOUT THE WRITTEN PERMISSION OF PHYLRICH IS PROHIBITED.  
**DO NOT SCALE DRAWING**

ASSY, MEDITHERM W/ VOLUME CONTROL

SIZE <b>A</b>	ASM/PRT NO. 1-136	REV B
SCALE: 1:3.5	WEIGHT: lbs.	SHEET 1 OF 2