

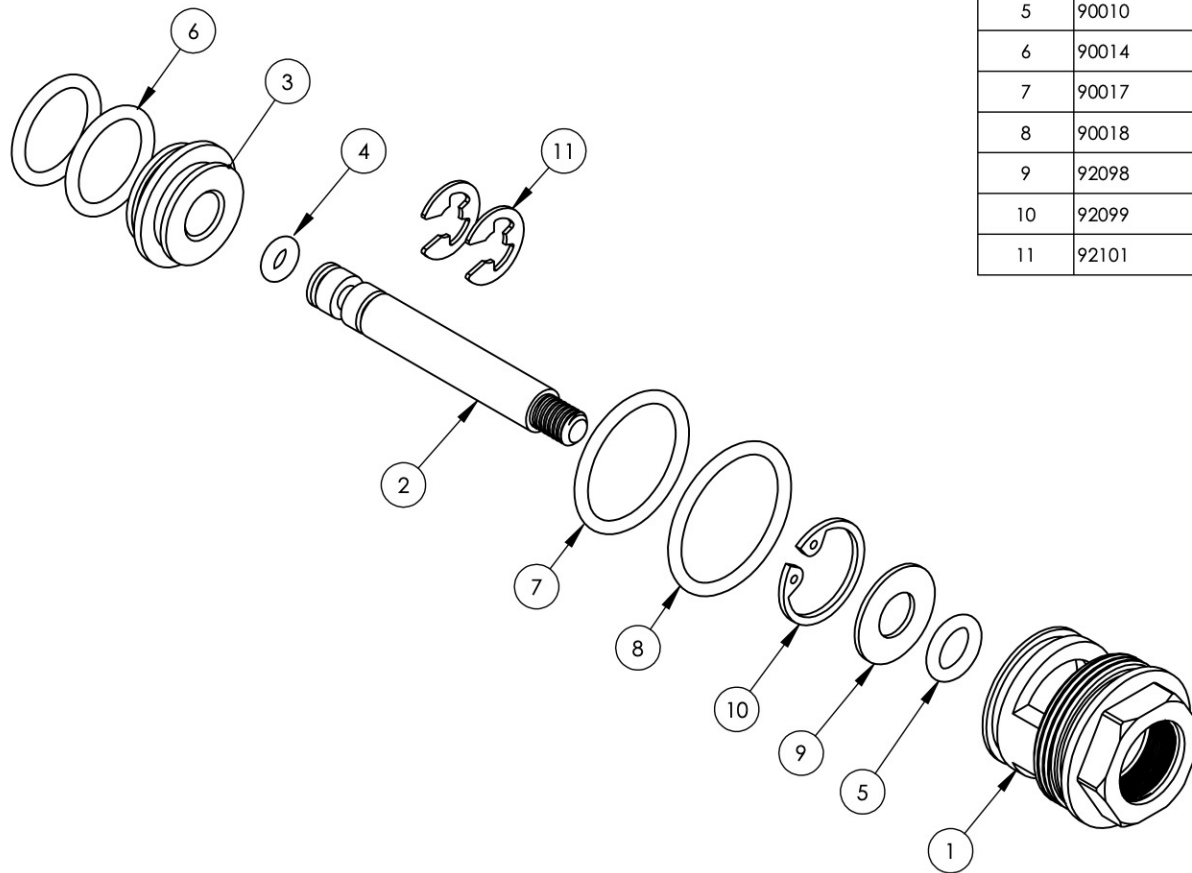
A

B

C

D

E



| ITEM NO. | PART NUMBER | DESCRIPTION | QTY. |
|----------|-------------|--|------|
| 1 | 10815 | CARTRIDGE BODY, PB DIVERTER | 1 |
| 2 | 10816 | DIVERTING ROD FOR PB | 1 |
| 3 | 10817 | DIVERTER PLUG | 1 |
| 4 | 90006 | O-RING, 1/8"ID X 1/4"OD X 1/16"THK, AS-568-006 | 1 |
| 5 | 90010 | O-RING, 1/4"ID X 3/8"OD X 1/16"THK, AS-568-010 | 1 |
| 6 | 90014 | O-RING, 1/2"ID X 5/8"OD X 1/16"THK, AS-568-014 | 2 |
| 7 | 90017 | O-RING, 1 1/16"ID X 1 3/16"OD X 1/16"THK, AS-568-017 | 1 |
| 8 | 90018 | O-RING, 3/4ID X 7/8"OD X 1/16THK, AS-568-018 | 1 |
| 9 | 92098 | BRASS WASHER | 1 |
| 10 | 92099 | RETAINING INTERNAL RING | 1 |
| 11 | 92101 | C-CLIP | 2 |

| ZONE | REV. | DESCRIPTION | DATE | APPROVED |
|-----------|------|-------------|------|----------|
| REVISIONS | | | | |

| NEXT ASSY | USED ON |
|-----------|---------|
| | |

| MATERIAL | APPLICATION |
|----------|-------------|
| | |

| FINISH | DO NOT SCALE DRAWING |
|--------|----------------------|
| | |

1261 LOGAN AVENUE
COSTA MESA, CALIFORNIA 92626
PHONE: 714.361.4800
FAX: 714.617.3120



MANUFACTURING

PROPRIETARY AND CONFIDENTIAL
THE INFORMATION CONTAINED IN THIS DRAWING IS THE SOLE PROPERTY OF RSS MANUFACTURING. ANY REPRODUCTION IN PART OR AS A WHOLE WITHOUT THE WRITTEN PERMISSION OF RSS MANUFACTURING IS PROHIBITED.

| | | | | |
|---|---|---|---|------------------------|
| - | - | INTERPRET GEOMETRIC DIMENSIONING & TOLERANCING IN ACCORDANCE WITH ASME Y14.5-2009 & ASME Y14.41-2003 STANDARDS, UNLESS OTHERWISE SPECIFIED. DIMENSIONS ARE IN INCHES. TOLERANCES ARE: | | |
| | | FRACTIONS ±1/64" | DECIMALS X.X: ±.1 X.XX: ±.01 X.XXX: ±.005 | ANGULAR ±.5° |
| | | | NAME | DATE |
| | | DRAWN | MAF | 2/27/2013 |
| | | CHECKED | GRE | |

CARTRIDGE, DIVERTER PB

| SIZE | ASM/PRT NO. | REV |
|------------|--------------|--------------|
| A | 1-118 | - |
| SCALE: 1:1 | WEIGHT: lbs. | SHEET 1 OF 1 |

5

4

3

2

1