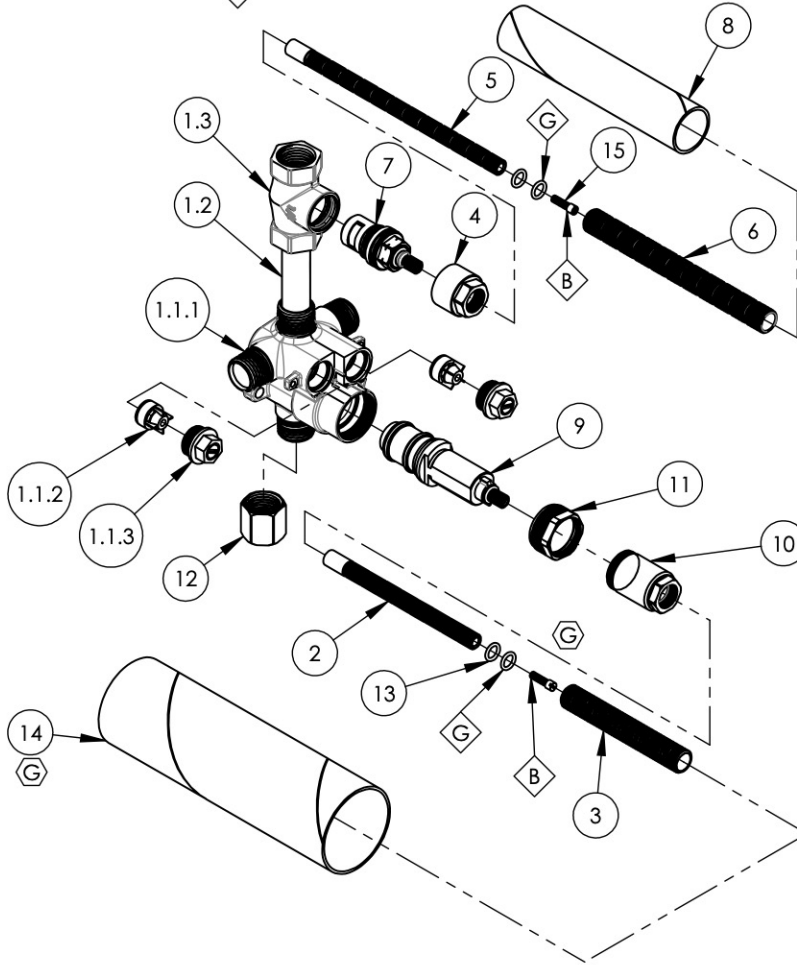


- NOTE(S):
- PART NUMBER, "/00" DENOTES PART SHALL HAVE FINISH.
 - APPLY NSF COMPLIANT GREASE TO ANY O-RING, SEALING JOINTS, AND/OR PIVOTAL POINTS.
 - APPLY NSF COMPLIANT LOCTITE TO THREADED AREA.
 - APPLY NSF COMPLIANT REMOVABLE (BLUE) LOCTITE TO THREADED AREA.
 - SILVER SOLDER JOINTS SHALL BE FULLY WETTED VIA CAPILLARY ACTION AND COMPLETELY NON-POROUS.

- ◇ G
- ◇ L
- ◇ B
- ◇ S



| ITEM NO. | PART NUMBER | DESCRIPTION | QTY. |
|----------|-------------|--|------|
| 1 | 2-131 | BRAZED MINI THERMO W/ 1/2" SHUTOFF BODY | 1 |
| 1.1 | 1-113 | MINI THERMOSTATIC BODY W/SHUTOFFS | 1 |
| 1.1.1 | 10624 | BODY, MINI THERMOSTATIC | 1 |
| 1.1.2 | 11197 | CHECK VALVE INSERT, SPRING LOADED, NV15-15MM OD | 2 |
| 1.1.3 | 2-130 | SHUTOFF NUT, MINI THERMO | 2 |
| 1.2 | 11667 | 1/2" COPPER TUBE, 2.739" L, SWEAT FIT | 1 |
| 1.3 | 11665 | BODY FORGED, SHUTOFF SLIP-FIT TO 1/2" NPT | 1 |
| 2 | 10054 | STEM EXTENSION, 6" LONG 20PT INT. TO 16PT LONG EXT. BROACH | 1 |
| 3 | 10209 | SHANK, NIPPLE THREAD ALL 9/16"-20UN WITH .433"ID | 1 |
| 4 | 11321 | CARTRIDGE RETAINER NUT | 1 |
| 5 | 11416 | STEM EXTENSION, 20PT TO 16PT, XXL | 1 |
| 6 | 11498 | ALL THREAD, EXTENSION, 9/16"-20, 5-9/16"L, XXL | 1 |
| 7 | 11540 | CARTRIDGE, 1/2"G 20PT HOT, HI-TRQ LLL, EXACTO | 1 |
| 8 | 11648 | MUD GUARD, CARDBOARD, LONG | 1 |
| 9 | 11973 | CARTRIDGE MINI-THERM. VALVE, INTEGRATED LIMIT STOP, THERMOSTAR S18 TYP 2 | 1 |
| 10 | 12073 | COVER SLEEVE ADAPTOR, MINI THERM, FOR INTEGRATED LIMIT STOP | 1 |
| 11 | 12076 | RETAINER NUT, NEW CRTRIDGE W/ INTEGRATED STOP | 1 |
| 12 | 30238 | HEX CAP, 1/2" NPT | 1 |
| 13 | 90011 | O-RING, 5/16"ID X 1/16"THK, AS-568-011 | 4 |
| 14 | 12272 | MUD GUARD, CARDBOARD, MINI THERM, 2-1/8" OD X 7" LENGTH | 1 |
| 15 | 92157 | SCREW, SMALL HD M4X0.7 - 1/2"L | 2 |

| B5 | G | UPDATED MUD GUARD & BROACH SCREW | 1/19/2023 | LFV |
|-----------|------|----------------------------------|-----------|----------|
| ZONE | REV. | DESCRIPTION | DATE | APPROVED |
| REVISIONS | | | | |

PROPRIETARY AND CONFIDENTIAL
 THE INFORMATION CONTAINED IN THIS DRAWING IS THE SOLE PROPERTY OF PHYLRICH. ANY REPRODUCTION IN PART OR AS A WHOLE WITHOUT THE WRITTEN PERMISSION OF PHYLRICH IS PROHIBITED.
DO NOT SCALE DRAWING

1261 LOGAN AVENUE
 COSTA MESA, CALIFORNIA 92626
 PHONE: 714.361.4800
 FAX: 714.617.3120

PHYLRICH
 D.L. Long Lumber & Iron Works

1/2" MINI-THERMOSTATIC VALVE W/
 VOLUME CONTROL

| | | |
|---------------|--------------|--------------|
| SIZE | ASM/PRT NO. | REV |
| A | 1-116 | G |
| SCALE: 1:4.25 | WEIGHT: lbs. | SHEET 1 OF 2 |