

NOTE(S):
1. PART NUMBER, "/00" DENOTES PART SHALL HAVE FINISH.

2. APPLY NSF COMPLIANT GREASE TO ANY O-RING, SEALING JOINTS, AND/OR PIVOTAL POINTS.

3. APPLY NSF COMPLIANT LOCTITE TO THREADED AREA.

4. APPLY NSF COMPLIANT REMOVABLE (BLUE) LOCTITE TO THREADED AREA.

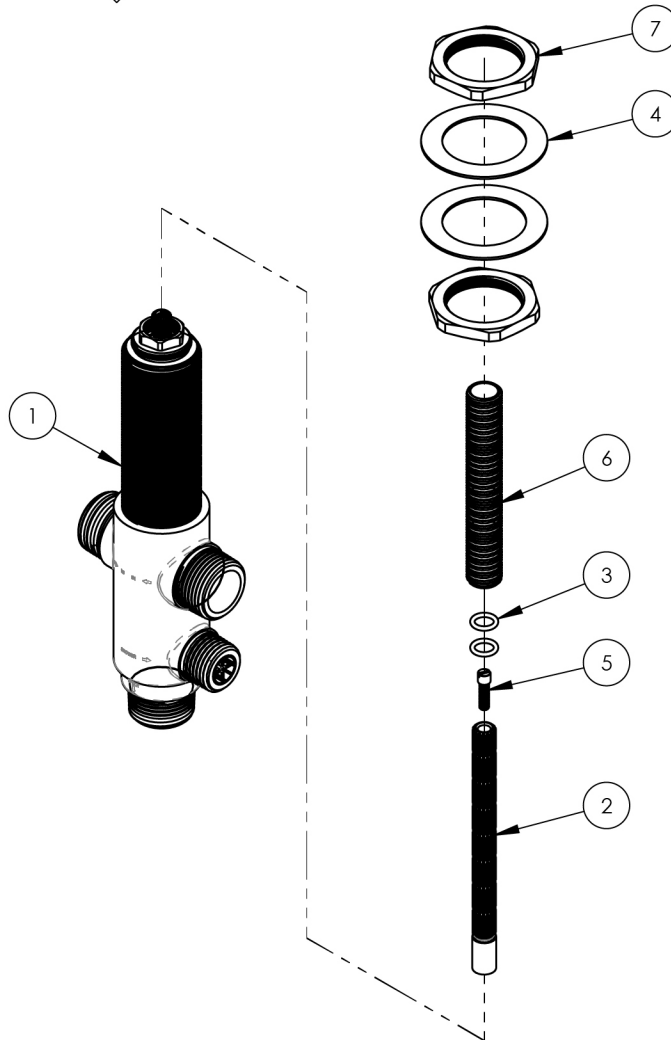
5. SILVER SOLDER JOINTS SHALL BE FULLY WETTED VIA CAPILLARY ACTION AND COMPLETELY NON-POROUS.

G

L

B

S



ITEM NO.	PART NUMBER	DESCRIPTION	QTY.
1	1-081	DECK DIVERTER VALVE ASSY, TWO FUNCTION	1
2	10054	STEM EXTENSION, 6" LONG 20PT INT. TO 16PT LONG EXT. BROACH	1
3	90011	O-RING, 5/16"ID X 1/16"THK, AS-568-011	2
4	92138	BRASS WASHER, THIN	2
5	92157	SCREW, SMALL HD M4X0.7 - 1/2"L	1
6	10209	SHANK, NIPPLE THREAD ALL 9/16"-20UN WITH .433"ID	1
7	92313	HEX NUT, 1-1/4"-20 THREAD	2

ZONE	REV.	DESCRIPTION	DATE	APPROVED
------	------	-------------	------	----------

REVISIONS

1261 LOGAN AVENUE
COSTA MESA, CALIFORNIA 92626
PHONE: 714.361.4800
FAX: 714.617.3120

PHYL RICH[®]
Defining Luxury Since 1959

PROPRIETARY AND CONFIDENTIAL
THE INFORMATION CONTAINED IN THIS DRAWING
IS THE SOLE PROPERTY OF PHYL RICH. ANY
REPRODUCTION IN PART OR AS A WHOLE
WITHOUT THE WRITTEN PERMISSION OF PHYL RICH
IS PROHIBITED.

DO NOT SCALE DRAWING

TWO FUNCTION DECK DIVERTER VALVE W/ STEM & MOUNTING ASSEMBLY

SIZE	ASM/PRT NO.	REV
A	1-082	-
SCALE: 1:3	WEIGHT: lbs.	SHEET 1 OF 2