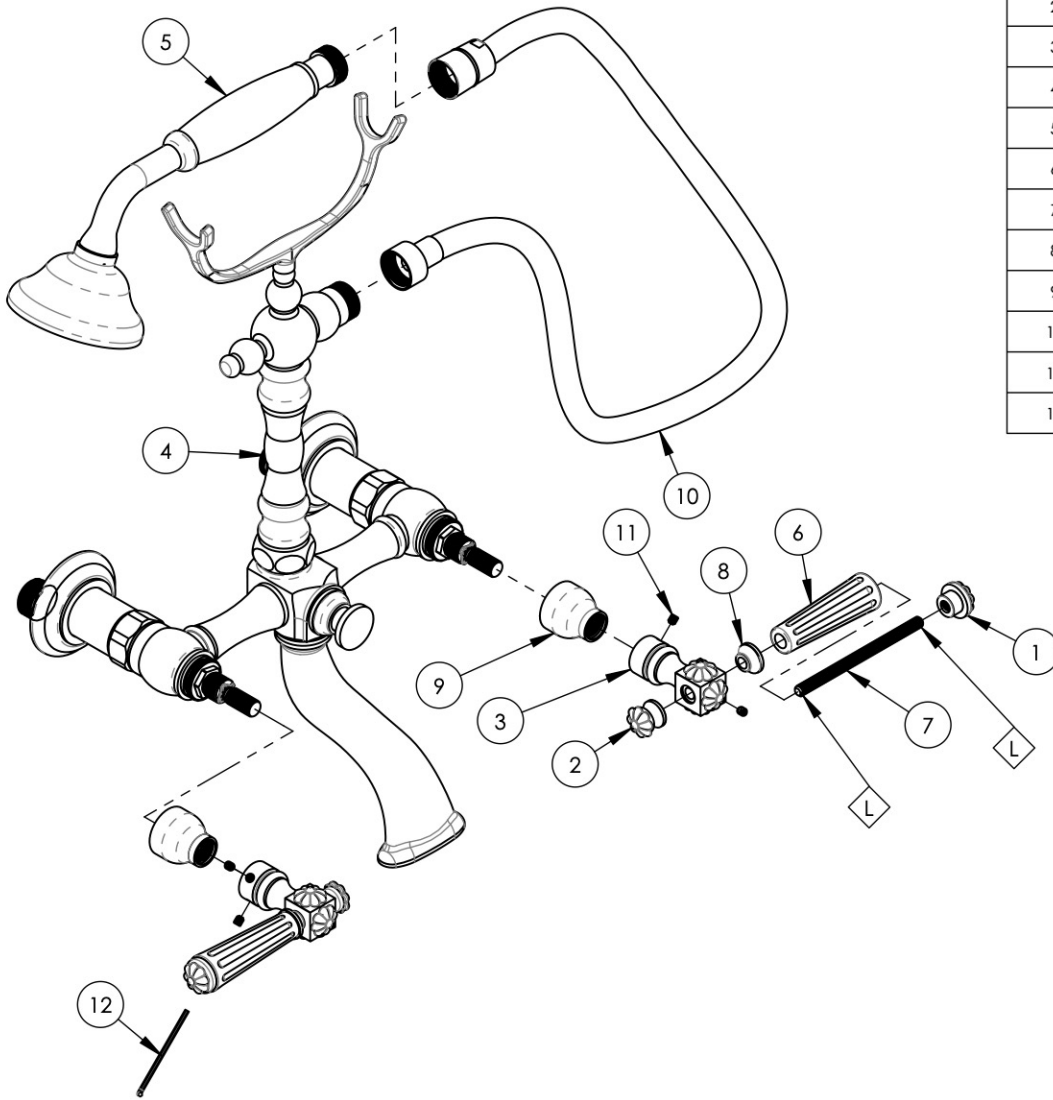


NOTE(S):
 1. APPLY NSF COMPLIANT LOCTITE TO THREADED AREA. L



| ITEM NO. | PART NUMBER | DESCRIPTION | QTY. |
|----------|-------------|--|------|
| 1 | 2-111/00 | SUB-ASSY. END CAP FINIAL, MARVELLE | 2 |
| 2 | 2-112/00 | SUB-ASSY. FINIAL EXTENSION BACK LEVER | 2 |
| 3 | 2-113/00 | SUB-ASSY. LEVER TRASITION FINIAL, MARVELLE | 2 |
| 4 | 3-306/00 | EXPOSED TUB & SHOWER, OLD TYME UNIT | 1 |
| 5 | 4-128/00 | HAND SHOWER, OLD TYME UNIT | 1 |
| 6 | 10541/00 | LEVER HANDLE INSERT, MARVELLE | 2 |
| 7 | 10543 | THREADED ROD, 1/4"-20 X 3"-5/8 L | 2 |
| 8 | 11102/00 | BASE HANDLE FOR LEVER HEX TRADITIONAL 500 SERIES | 2 |
| 9 | 11127/00 | CARTRIDGE HOUSING, 9/16"-20 UN-2B | 2 |
| 10 | 11146/00 | HOSE, 1/2"-14 NPSM | 1 |
| 11 | 92008 | SET SCREW, CUP POINT 8-32, 3/16" L. | 4 |
| 12 | P39001 | HEX KEY 5/64, FOR 8-32 SET SCREW | 1 |

| ZONE | REV. | DESCRIPTION | DATE | APPROVED |
|-----------|------|-------------|------|----------|
| REVISIONS | | | | |

1261 LOGAN AVENUE
 COSTA MESA, CALIFORNIA 92626
 PHONE: 714.361.4800
 FAX: 714.617.3120

PHYLIRICH[®]
 Defining Luxury Since 1959

PROPRIETARY AND CONFIDENTIAL
 THE INFORMATION CONTAINED IN THIS DRAWING IS THE SOLE PROPERTY OF PHYLIRICH. ANY REPRODUCTION IN PART OR AS A WHOLE WITHOUT THE WRITTEN PERMISSION OF PHYLIRICH IS PROHIBITED.

| | | | | |
|-----------------------------|---------|---|---|-----------------------|
| - | - | INTERPRET GEOMETRIC DIMENSIONING & TOLERANCING IN ACCORDANCE WITH ASME Y14.5-2009 & ASME Y14.41-2003 STANDARDS, UNLESS OTHERWISE SPECIFIED. DIMENSIONS ARE IN INCHES. TOLERANCES ARE: | | |
| NEXT ASSY | USED ON | FRACTIONS ±1/16" | DECIMALS X.X: ±.1 X.XX: ±.01 X.XXX: ±.005 | ANGULAR ±2° |
| APPLICATION | | MATERIAL | NAME | DATE |
| FINISH | | DRAWN | AMM | 11/9/2020 |
| DO NOT SCALE DRAWING | | CHECKED | AMM | 11/9/2020 |

MARVELLE LEVER HANDLE ON EXPOSED TUB & SHOWER SET

SIZE **A** ASM/PRT NO. **K2393-54/00** REV **-**

SCALE: 1:4 WEIGHT: lbs. SHEET 1 OF 2