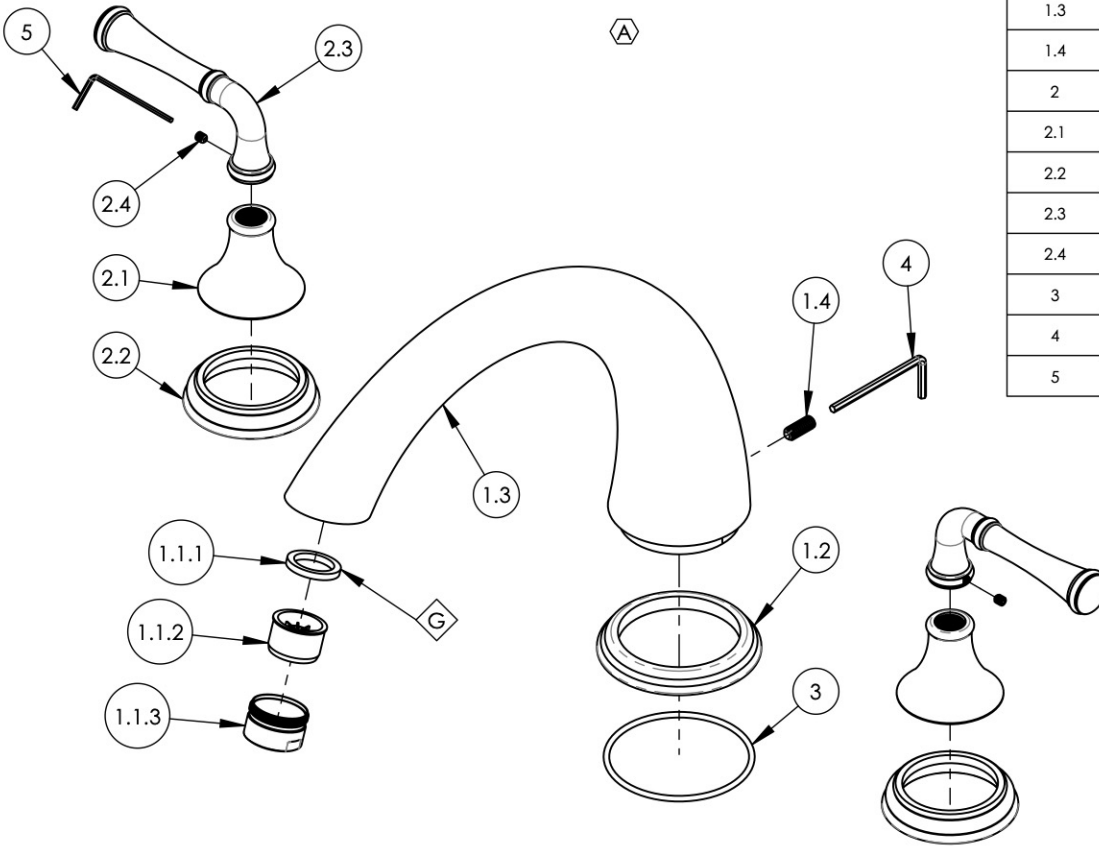


NOTE(S):  
 1. APPLY NSF COMPLIANT GREASE TO ANY O-RING, SEALING JOINTS, AND/OR PIVOTAL POINTS.



ITEM NO.	PART NUMBER	DESCRIPTION	QTY.
1	3-197/00	DECK TUB SPOUT, P27020 (K5120) CARRARA, REVERE SERIES	1
1.1	3-610/00	AERATOR & HOUSING, M28X1, TUB FILLER, FULL FLOW	1
1.1.1	10584	RUBBER SEAL, AERATOR GASKET 1.0"OD X .753"ID X .125"THK	1
1.1.2	10582	AERATOR, NEOSTRAHL. M28, TUB FILLER, FULL FLOW	1
1.1.3	10583/00	AERATOR HOUSING, M28 41.2007.000	1
1.2	P27035/00	ESCUTCHEON BASE, 3RING DECK SPOUT	1
1.3	P27020/00	K5120 DECK SPOUT	1
1.4	92262	SET SCREW, CUP PT 1/4"-20 X 5/8"L	1
2	3-475/00	ASSY. LEVER HANDLE, 3 RING SERIES	2
2.1	10972/00	HUB, TRANSITIONAL 3RING	1
2.2	11188/00	ESCUTCHEON, HANDLE BASE 3RING	1
2.3	P01079/00	HANDLE, STRAIGHT LEVER 3RING 205	1
2.4	92008	SET SCREW, CUP POINT 8-32, 3/16" L.	1
3	90145	O-RING, 2-9/16"ID X 3/32"THK., AS-568-145	1
4	92216	HEX L-KEY 1/8" HEX x 2-5/16"L	1
5	P39001	HEX KEY 5/64, FOR 8-32 SET SCREW	1

ALL	A	REMOVE VALVES/ ROUGH IN, UPDATE TEMPLATE, ADD CALL OUTS & HANDLE/SPOUT SUBASSYS	4/14/2020	AMM
ZONE	REV.	DESCRIPTION	DATE	APPROVED
REVISIONS				

1261 LOGAN AVENUE  
 COSTA MESA, CALIFORNIA 92626  
 PHONE: 714.361.4800  
 FAX: 714.617.3120

**PHYLIRICH**<sup>®</sup>  
 Defining Luxury Since 1959

**PROPRIETARY AND CONFIDENTIAL**  
 THE INFORMATION CONTAINED IN THIS DRAWING IS THE SOLE PROPERTY OF PHYLIRICH. ANY REPRODUCTION IN PART OR AS A WHOLE WITHOUT THE WRITTEN PERMISSION OF PHYLIRICH IS PROHIBITED.

-	-	INTERPRET GEOMETRIC DIMENSIONING & TOLERANCING IN ACCORDANCE WITH ASME Y14.5-2009 & ASME Y14.41-2003 STANDARDS, UNLESS OTHERWISE SPECIFIED. DIMENSIONS ARE IN INCHES. TOLERANCES ARE:		
NEXT ASSY	USED ON	FRACTIONS ±1/16"	DECIMALS X.X: ±.1 X.XX: ±.01 X.XXX: ±.005	ANGULAR ±2°
MATERIAL	APPLICATION	NAME	DATE	
FINISH	DRAWN	CA	9/22/2013	
<b>DO NOT SCALE DRAWING</b>		CHECKED		

**ROMAN TUB SET, 3RING SERIES, STRAIGHT LEVER (205-40/00)**

SIZE	ASM/PRT NO.	REV
<b>A</b>	D1205E/00	<b>A</b>
SCALE: 1:3.5	WEIGHT: lbs.	SHEET 1 OF 2