

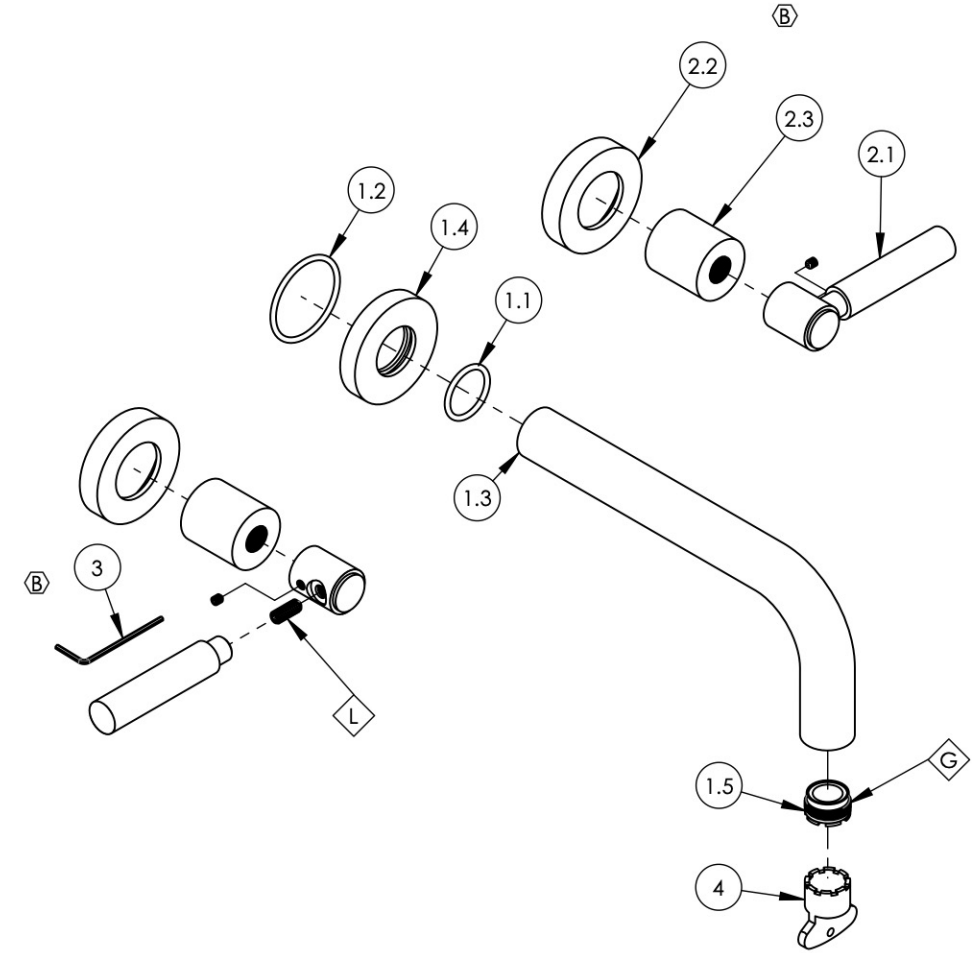
NOTE(S):
 1. PART NUMBER, "/00" DENOTES PART SHALL HAVE FINISH.

2. APPLY NSF COMPLIANT GREASE TO ANY O-RING, SEALING JOINTS, AND/OR PIVOTAL POINTS.

3. APPLY NSF COMPLIANT LOCTITE TO THREADED AREA.

4. APPLY NSF COMPLIANT REMOVABLE (BLUE) LOCTITE TO THREADED AREA.

5. SILVER SOLDER JOINTS SHALL BE FULLY WETTED VIA-CAPILLARY ACTION AND COMPLETELY NON-POROUS.



ITEM NO.	PART NUMBER	DESCRIPTION	QTY.
1	3-418/00	WALL TUB, SPOUT ONLY, 7-1/2" L, BASIC	1
1.1	90119	O-RING, 15/16"ID X 1-1/8"OD X 3/32"THK, AS-568-119	1
1.2	90129	O-RING, 1-9/16"ID X 3/32THK, AS-568-129	1
1.3	P19018/00	7-1/2" WALL LAV SPOUT, BASIC SERIES	1
1.4	P19017/00	ESCUTCHEON, FOR SPOUT	1
1.5	P05024	AERATOR CACHE COIN SLOT, M21.5X1.0 FULL FLOW	1
2	3-441/00	ASSY, LEVER HANDLE, BASIC	2
2.1	3-408/00	ASSY. LEVER HANDLE, BASIC SERIES.	1
2.2	P02035_2/00	ESCUTCHEON, CONTEMPORARY	1
2.3	P02035_1/00	HUB ESCUTCHEON, CONTEMPORARY TOP	1
3	92021	HEX KEY 5/64, FOR 8-32 SET SCREW	1
4	P05025	AERATOR, BASIC KEY, PLASTIC RED	1

ZONE	REV.	DESCRIPTION	DATE	APPROVED
C5, D4	B	UPDATE HANDLE ASSEMBLY & HEX KEY	10/29/2021	AMM
REVISIONS				

1261 LOGAN AVENUE
 COSTA MESA, CALIFORNIA 92626
 PHONE: 714.361.4800
 FAX: 714.617.3120

PHYLIRICH[®]
 Defining Luxury Since 1959

PROPRIETARY AND CONFIDENTIAL
 THE INFORMATION CONTAINED IN THIS DRAWING IS THE SOLE PROPERTY OF PHYLIRICH. ANY REPRODUCTION IN PART OR AS A WHOLE WITHOUT THE WRITTEN PERMISSION OF PHYLIRICH IS PROHIBITED.
DO NOT SCALE DRAWING

WALL TUB SET, SPOUT 7-1/2" L, LEVER, BASIC, (130-56)

SIZE A	ASM/PRT NO. D1130/00	REV B
SCALE: 1:3.5	WEIGHT: lbs.	SHEET 1 OF 2