

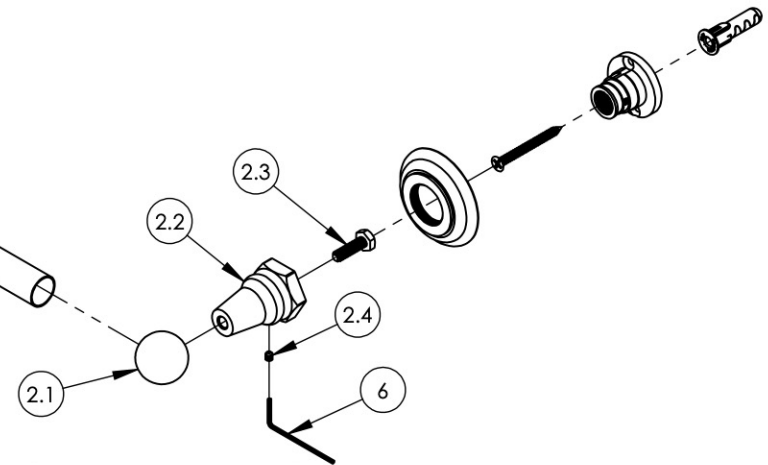
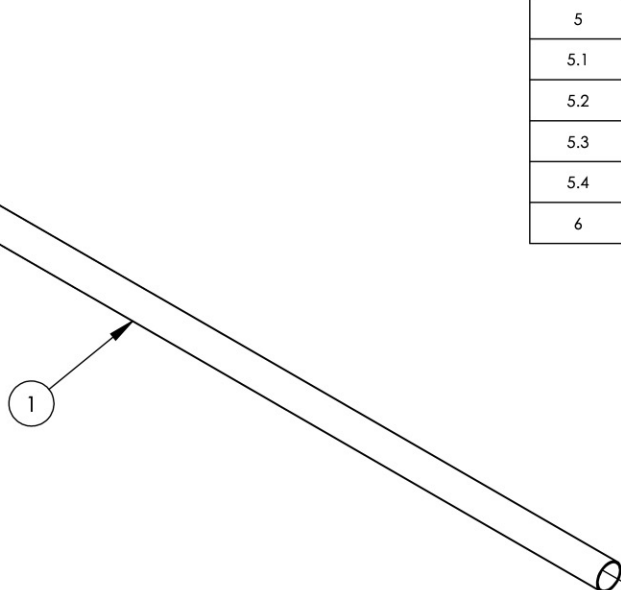
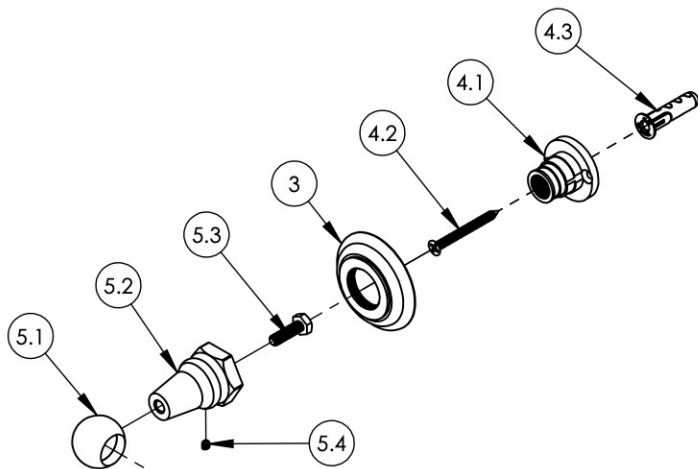
A

B

C

D

E



ITEM NO.	PART NUMBER	DESCRIPTION	QTY.
1	P23075/00	30" KLD TOWEL BAR	1
2	3-563/00	ASSY, BALL END W/ POST BASE, RIGHT	1
2.1	11081/00	END BALL, TOWEL BAR, 500 SERIES	1
2.2	11076/00	POST, 500 SERIES	1
2.3	92232	HEX HEAD CAP SCREW, 1/4-20, 7/8" L	1
2.4	92008	SET SCREW, CUP POINT 8-32, 3/16" L.	1
3	10619/00	ESCUTCHEON, TRADITIONAL LAV 1"-20	2
4	3-568	ASSY, WALL MOUNT HARDWARE KIT	2
4.1	11050	MOUNTING KIT, WALL FLANGE	1
4.2	92043	SCREW, FLAT HD #10 SIZE W/ #2 PHIL DRIVE, 2"L	1
4.3	92046	ANCHOR SCREW 3/8" HOLE, TOGGLER AF10	1
5	3-569/00	ASSY, BALL END W/ POST BASE, LEFT	1
5.1	11081/00	END BALL, TOWEL BAR, 500 SERIES	1
5.2	11076/00	POST, 500 SERIES	1
5.3	92232	HEX HEAD CAP SCREW, 1/4-20, 7/8" L	1
5.4	92008	SET SCREW, CUP POINT 8-32, 3/16" L.	1
6	P39001	5/64 HEX KEY	1

ALL	C	UPDATED DRAWING AND COMPONENTS	11/12/2018	RAH
-----	---	--------------------------------	------------	-----

ZONE	REV.	DESCRIPTION	DATE	APPROVED
REVISIONS				

1261 LOGAN AVENUE COSTA MESA, CALIFORNIA 92626		<b>PROPRIETARY AND CONFIDENTIAL</b>
PHONE: 714.361.4800 FAX: 714.617.3120		
THE INFORMATION CONTAINED IN THIS DRAWING IS THE SOLE PROPERTY OF RSS MANUFACTURING. ANY REPRODUCTION IN PART OR AS A WHOLE WITHOUT THE WRITTEN PERMISSION OF RSS MANUFACTURING IS PROHIBITED.		

-	-	INTERPRET GEOMETRIC DIMENSIONING & TOLERANCING IN ACCORDANCE WITH ASME Y14.5-2009 & ASME Y14.41-2003 STANDARDS, UNLESS OTHERWISE SPECIFIED. DIMENSIONS ARE IN INCHES. TOLERANCES ARE:		
NEXT ASSY	USED ON	<b>FRACTIONS</b> ±1/64"	<b>DECIMALS</b> X.X: ±.1 X.XX: ±.01 X.XXX: ±.005	<b>ANGULAR</b> ±.5°
APPLICATION		MATERIAL	NAME	DATE
FINISH		DRAWN	4/23/2014	
<b>DO NOT SCALE DRAWING</b>		CHECKED	GRE	

TOWEL BAR 30", HEX TRADITIONAL SERIES

SIZE	ASM/PRT NO.	REV
<b>A</b>	500-72/00	<b>C</b>
SCALE: 1:4.25	WEIGHT: lbs.	SHEET 1 OF 2

5

4

3

2

1