

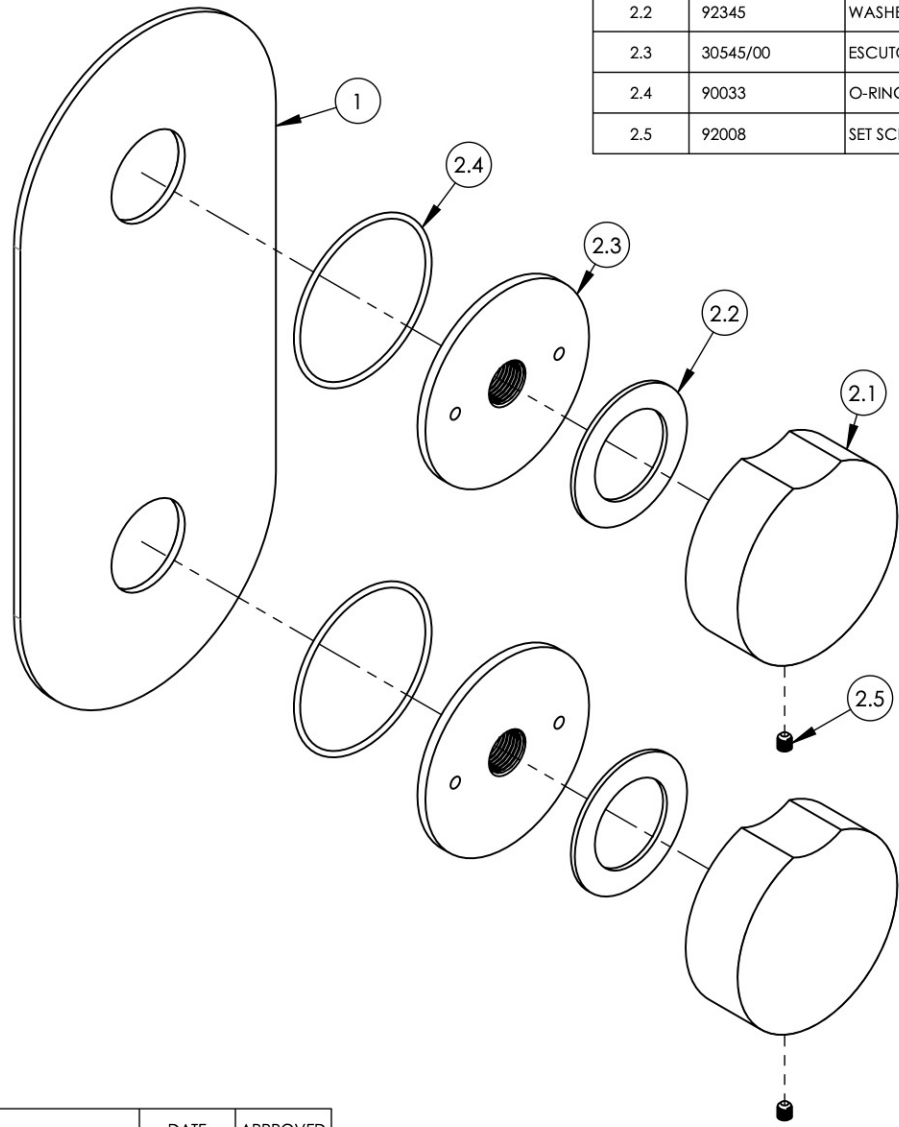
NOTE(S):

1. EXAMPLE OF SPLIT FINISH CODE:
A. 4-710/026X030
2. MARBLE HANDLE STONE OPTIONS:
A. BLACK MARBLE = 3-798 (.../00X030)
B. WHITE MARBLE = 3-797 (.../00X031)
3. APPLY NSF COMPLIANT GREASE TO ANY O-RING, SEALING JOINTS, AND/OR PIVOTAL POINTS.
4. APPLY NSF COMPLIANT LOCTITE TO THREADED AREA.



SEE NOTES*

ITEM NO.	PART NUMBER	DESCRIPTION	QTY.
1	11672/00	TRIM PLATE, TWO HANDLE, ROND	1
2	3-798/00	ROUND MARBLE HANDLE, WALL LAV, MOUNT ASSY	2
2.1	2-408	BLACK MARBLE HANDLE W/ BROACH INSERT	1
2.2	92345	WASHER	1
2.3	30545/00	ESCUTCHEON, WALL MOUNT, SHOWER	1
2.4	90033	O-RING, 2"ID X 2-1/8"OD X 1/16"THK, AS-568-033	1
2.5	92008	SET SCREW, CUP POINT 8-32, 3/16" L.	1



ZONE	REV.	DESCRIPTION	DATE	APPROVED
------	------	-------------	------	----------

REVISIONS

1261 LOGAN AVENUE
COSTA MESA, CALIFORNIA 92626
PHONE: 714.361.4800
FAX: 714.617.3120

PHYLIRICH[®]
Defining Luxury Since 1959

PROPRIETARY AND CONFIDENTIAL
THE INFORMATION CONTAINED IN THIS DRAWING IS THE SOLE PROPERTY OF PHYLIRICH. ANY REPRODUCTION IN PART OR AS A WHOLE WITHOUT THE WRITTEN PERMISSION OF PHYLIRICH IS PROHIBITED.
DO NOT SCALE DRAWING

ASSY, SHOWER TRIM PLATE, TWO HANDLE, ROUND MARBLE HANDLE, CIRC

SIZE A	ASM/PRT NO. 4-710/00	REV -
SCALE: 1:2.125	WEIGHT: lbs.	SHEET 1 OF 2