

NOTE(S):
 1. PART NUMBER, "/00" DENOTES PART SHALL HAVE FINISH.

2. APPLY NSF COMPLIANT GREASE TO ANY O-RING, SEALING JOINTS, AND/OR PIVOTAL POINTS.

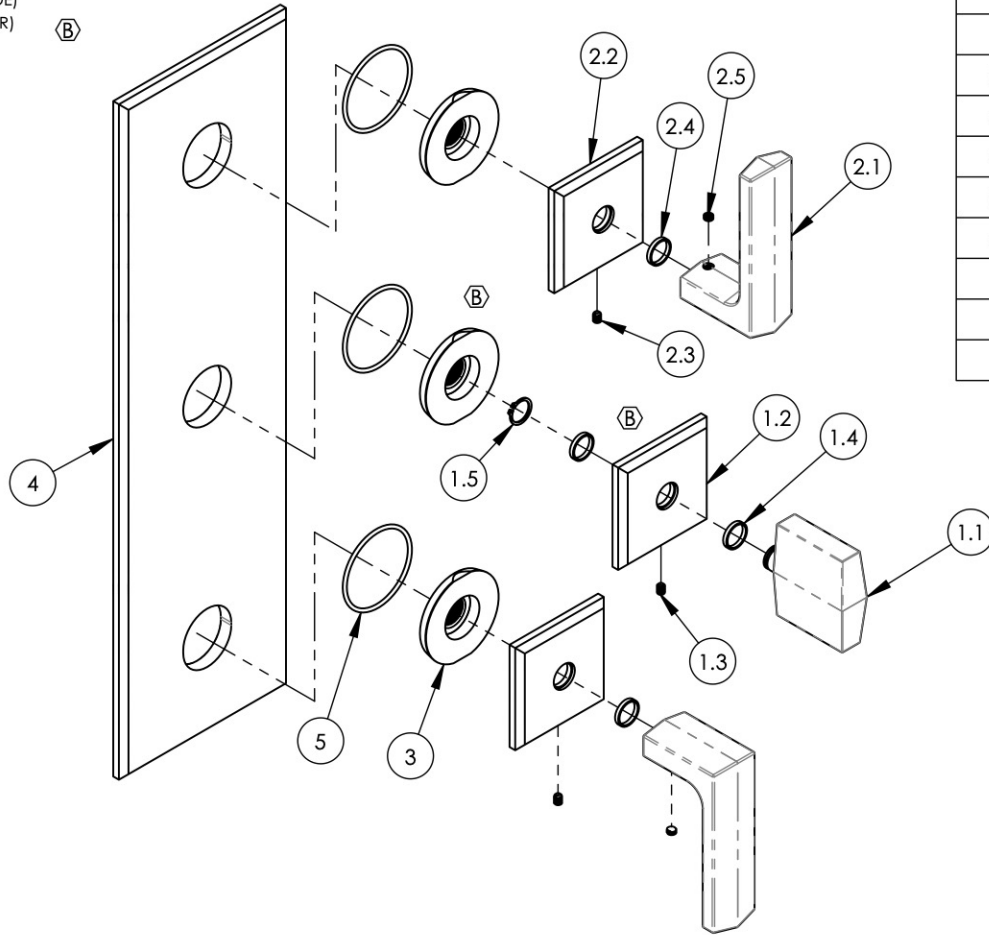
3. APPLY NSF COMPLIANT LOCTITE TO THREADED AREA.

4. APPLY NSF COMPLIANT REMOVABLE (BLUE) LOCTITE TO THREADED AREA.

5. SILVER SOLDER JOINTS SHALL BE FULLY WETTED VIA CAPILLARY ACTION AND COMPLETELY NON-POROUS.

6. FOR DEEPEER ESCUTCHEON:

- 3-601/00 (BLADE)
- 3-598/00 (LEVER)
- 92401



ITEM NO.	PART NUMBER	DESCRIPTION	QTY.
1	3-595/00	ASSY, BLADE HANDLE, DIAMA	1
1.1	11762/00	BLADE HANDLE, DIAMA	1
1.2	11764/00	ESCUTCHEON, HANDLE, DIAMA	1
1.3	92005	SET SCREW, CUP PT 6-32 UNC THREAD 3/16"L	1
1.4	92176	WEAR WASHER	2
1.5	92177	RETAINING RING, 7/16" SHAFT	1
2	3-596/00	ASSY, LEVER HANDLE, DIAMA	2
2.1	11769/00	LEVER HANDLE, DIAMA	1
2.2	11764/00	ESCUTCHEON, HANDLE, DIAMA	1
2.3	92005	SET SCREW, CUP PT 6-32 UNC THREAD 3/16"L	1
2.4	92176	WEAR WASHER	1
2.5	92163	SET SCREW, CONE PT 8-32 X 1/8"L	1
3	11003	SLEEVE MOUNT, WALL MT WIDESPREAD	3
4	11761/00	TRIM PLATE, 3 HOLE, DIAMA	1
5	90029	O-RING, 1-5/8"ID X 1-3/4"OD X 1/16"THK, AS-568-029	3

ZONE	REV.	DESCRIPTION	DATE	APPROVED
C4, D5	B	UPDATE SLEEVE MOUNT & HANDLE ASSY, ADD NOTE	2/22/2021	AMM
REVISIONS				

1261 LOGAN AVENUE
 COSTA MESA, CALIFORNIA 92626
 PHONE: 714.361.4800
 FAX: 714.617.3120

PHYLIRICH[®]
 Defining Luxury Since 1959

PROPRIETARY AND CONFIDENTIAL
 THE INFORMATION CONTAINED IN THIS DRAWING IS THE SOLE PROPERTY OF PHYLIRICH. ANY REPRODUCTION IN PART OR AS A WHOLE WITHOUT THE WRITTEN PERMISSION OF PHYLIRICH IS PROHIBITED.
DO NOT SCALE DRAWING

ASSY, 3 HOLE TRIM, LEVER HANDLES,
 DIAMA

SIZE	ASM/PRT NO.	REV
A	4-564/00	B
SCALE: 1:3.25	WEIGHT: lbs.	SHEET 1 OF 2