

5

4

3

2

1

NOTE(S):

1. EXAMPLE OF SPLIT FINISH CODE:  
A. 3-373/026X030

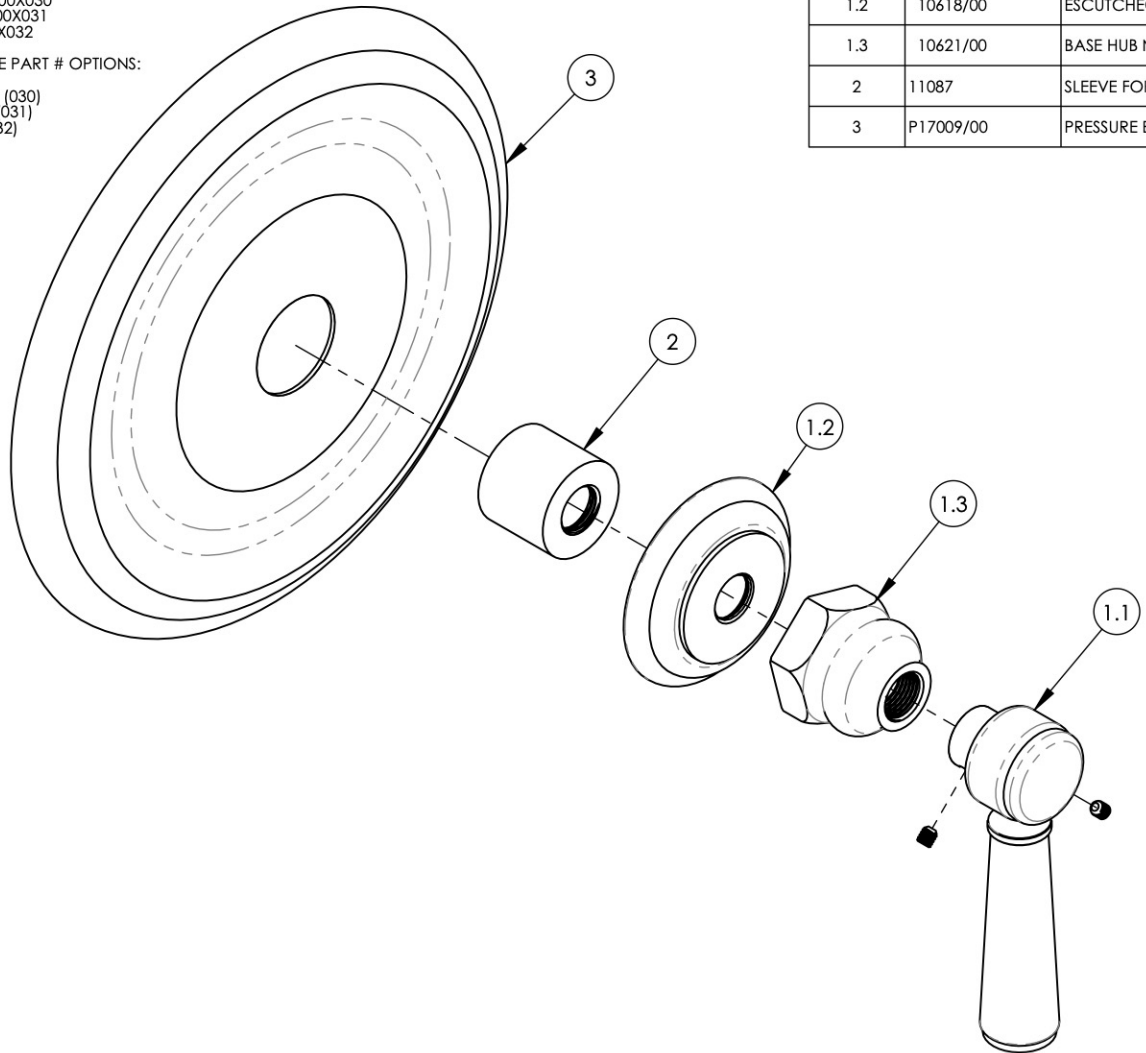
2. SPLIT FINISH CODES:

A. BLACK MARBLE = 3-373/00X030  
B. WHITE MARBLE = 3-373/00X031  
C. SOAPSTONE = 3-373/00X032

3. AVAILABLE HANDLE STONE PART # OPTIONS:

A. BLACK MARBLE = 11328 (030)  
B. WHITE MARBLE = 11329 (031)  
C. SOAPSTONE = 11330 (032)

(B)



ITEM NO.	PART NUMBER	DESCRIPTION	QTY.
1	3-373/00	MARBLE LEVER HANDLE ASSY., WALL/SHOWER	1
1.1	2-142/00	MARBLE LEVER HANDLE, 500 SERIES, HEX TRADITIONAL	1
1.2	10618/00	ESCUTCHEON, TRADITIONAL 500	1
1.3	10621/00	BASE HUB NUT	1
2	11087	SLEEVE FOR PB-THERM PLATE	1
3	P17009/00	PRESSURE BALANCE TRIM PLATE	1

E

E

D

D

C

C

B

B

ALL	B	NEW TEMPLATE, ADD SLEEVE MARBLE NOTES, REMOVE HEX KEY, UPDATE DWG NAME	12/12/2019	AMM
ZONE	REV.	DESCRIPTION	DATE	APPROVED
REVISIONS				

1261 LOGAN AVENUE  
COSTA MESA, CALIFORNIA 92626  
PHONE: 714.361.4800  
FAX: 714.617.3120

**PHYLIRICH**<sup>®</sup>  
Defining Luxury Since 1959

**PROPRIETARY AND CONFIDENTIAL**  
THE INFORMATION CONTAINED IN THIS DRAWING IS THE SOLE PROPERTY OF PHYLIRICH. ANY REPRODUCTION IN PART OR AS A WHOLE WITHOUT THE WRITTEN PERMISSION OF PHYLIRICH IS PROHIBITED.

-	-	INTERPRET GEOMETRIC DIMENSIONING & TOLERANCING IN ACCORDANCE WITH ASME Y14.5-2009 & ASME Y14.41-2003 STANDARDS, UNLESS OTHERWISE SPECIFIED. DIMENSIONS ARE IN INCHES. TOLERANCES ARE:		
NEXT ASSY	USED ON	<b>FRACTIONS</b> ±1/16"	<b>DECIMALS</b> X.X: ±.1 X.XX: ±.01 X.XXX: ±.005	<b>ANGULAR</b> ±2°
APPLICATION		MATERIAL	NAME	DATE
FINISH		DRAWN	LLO	8/3/2015
<b>DO NOT SCALE DRAWING</b>		CHECKED	GRE	

**SHOWER TRIM PLATE, SINGLE HANDLE, MARBLE, HEX TRADITIONAL**

SIZE	ASM/PRT NO.	REV
<b>A</b>	4-156/00	<b>B</b>

SCALE: 1:2      WEIGHT: lbs.      SHEET 1 OF 2

5

4

3

2

1

A

A