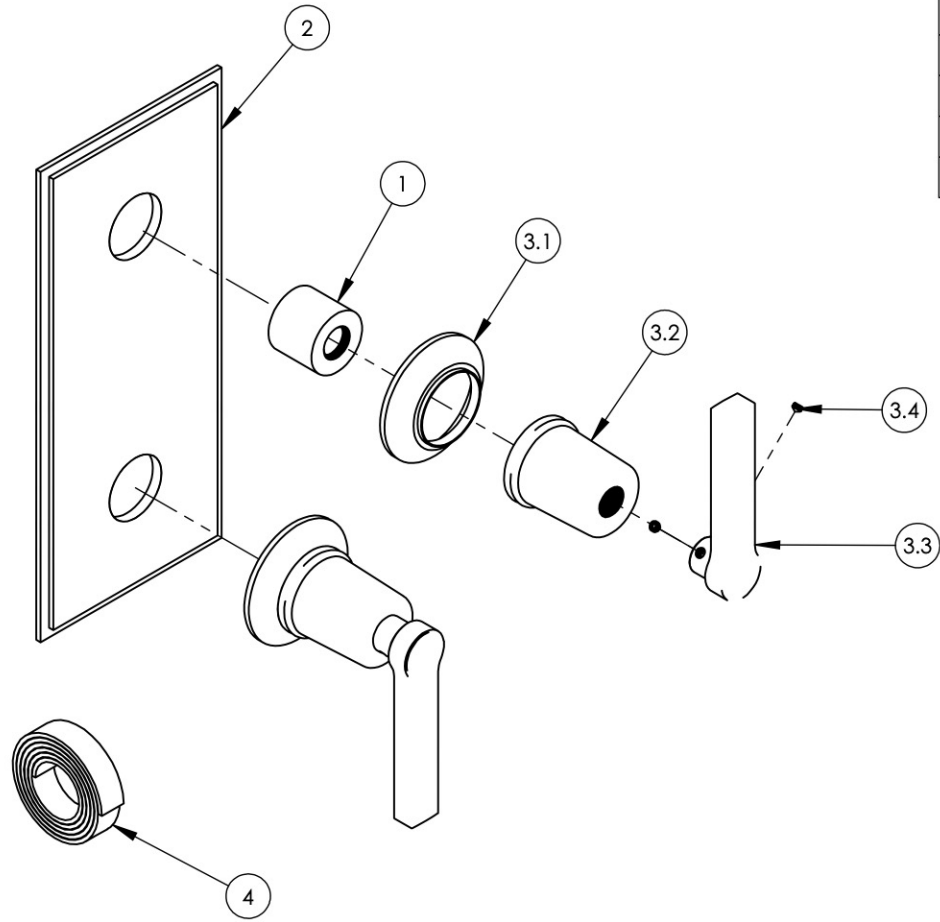


ITEM NO.	PART NUMBER	DESCRIPTION	QTY.
1	10986	CENTERING PLATE SLEEVE	2
2	11203/00	PLATE, TWO HANDLE STEPPED LIP	1
3	3-133/00	LEVER HANDLE, HEX MODERN, 501 SERIES	2
3.1	10921/00	ESCUTCHEON, TRANSITIONAL	1
3.2	10922/00	HUB, FOR HEX TRANSITIONAL	1
3.3	11036/00	HANDLE LEVER, CONTEMPORARY 16PT	1
3.4	92163	SET SCREW, CONE PT 8-32 X 1/8"L	2
4	90537	1/16" TAPE FOR WALL PLATE	1



A

B

C

D

E

ZONE	REV.	DESCRIPTION	DATE	APPROVED
REVISIONS				

1261 LOGAN AVENUE
COSTA MESA, CALIFORNIA 92626
PHONE: 714.361.4800
FAX: 714.617.3120



RSS MANUFACTURING

PROPRIETARY AND CONFIDENTIAL
THE INFORMATION CONTAINED IN THIS DRAWING IS THE SOLE PROPERTY OF RSS MANUFACTURING. ANY REPRODUCTION IN PART OR AS A WHOLE WITHOUT THE WRITTEN PERMISSION OF RSS MANUFACTURING IS PROHIBITED.

-	-	INTERPRET GEOMETRIC DIMENSIONING & TOLERANCING IN ACCORDANCE WITH ASME Y14.5-2009 & ASME Y14.41-2003 STANDARDS, UNLESS OTHERWISE SPECIFIED. DIMENSIONS ARE IN INCHES. TOLERANCES ARE:		
-	-	FRACTIONS ±1/64"	DECIMALS X.X: ±.1 X.XX: ±.01 X.XXX: ±.005	ANGULAR ±.5°
NEXT ASSY USED ON		APPLICATION		
MATERIAL		NAME	DATE	
FINISH		DRAWN	LLO	10/26/2015
DO NOT SCALE DRAWING		CHECKED	GRE	

**1/2" MINITHERMOSTATIC VALVE W/
VOLUME CONTROL, HEX MODERN SERIES**

SIZE	ASM/PRT NO.	REV
A	4-106/00	-
SCALE: 1:3	WEIGHT: lbs.	SHEET 1 OF 2

5

4

3

2

1