

NOTE(S):
 1. PART NUMBER, "/00" DENOTES PART SHALL HAVE FINISH.

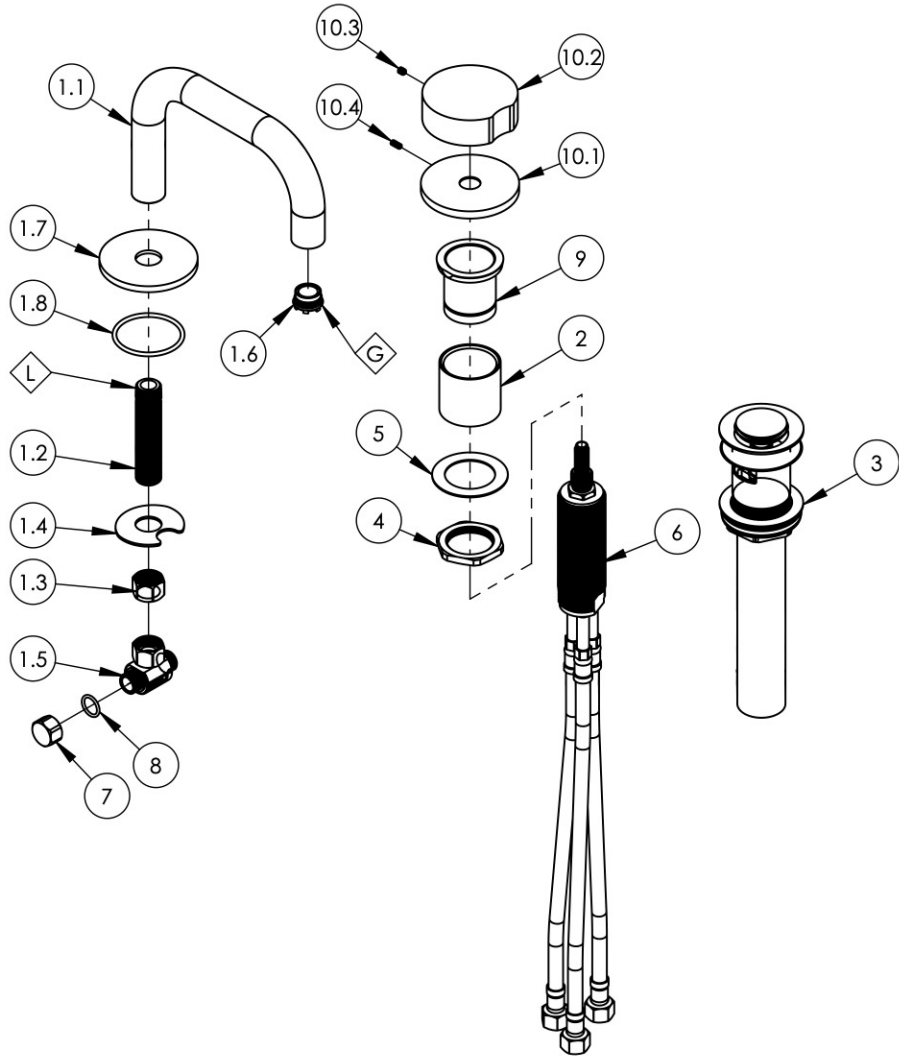
2. APPLY NSF COMPLIANT GREASE TO ANY O-RING, SEALING JOINTS, AND/OR PIVOTAL POINTS.

3. APPLY NSF COMPLIANT LOCTITE TO THREADED AREA.

4. APPLY NSF COMPLIANT REMOVABLE (BLUE) LOCTITE TO THREADED AREA.

5. SILVER SOLDER JOINTS SHALL BE FULLY WETTED VIA CAPILLARY ACTION AND COMPLETELY NON-POROUS.

G
L
B
S



ITEM NO.	PART NUMBER	DESCRIPTION	QTY.
1	3-784/00	LOW SQUARE SPOUT, LAV	1
1.1	11704/00	SPOUT, SQUARE, WIDESPREAD	1
1.2	10745	THREAD ALL, 3/8"-18 NPSL - 3/8"NPT	1
1.3	10746	NUT, 3/8"-18 NPSL	1
1.4	92174	WASHER MOUNT WIDESPREAD (3/8")	1
1.5	1-112	TEE VALVE, 3/8" NPSM X 3/8" COMPRESSION	1
1.6	11428	AERATOR, CACHE TJ, 1.2GPM PCA PINK, 43.2260.450	1
1.7	30555/00	ESCUTCHEON, LAV SPOUT, FRONT STREET	1
1.8	90131	O-RING, 1-1/16ID X 3/32THK, AS-568-131	1
2	92180	EXTENSION SLEEVE, WIDESPREAD	1
3	3-545/00	BRASS PUSH TYPE DRAIN, W/ OVERFLOW & SMALL PLUG	1
4	92313	HEX NUT, 1-1/4"-20 THREAD	1
5	92138	BRASS WASHER, THIN	1
6	1-054	VALVE, DECK MOUNTED SINGLE HANDLE LAV DROP-IN	1
7	92492	CAP NUT, 3/8" COMPRESSION	1
8	90014	O-RING, 1/2"ID X 5/8"OD X 1/16"THK, AS-568-014	1
9	11077	SLEEVE MOUNT, DECK (ROMAN) TUB	1
10	3-819/00	ASSY, ROUND BRASS HANDLE, CIRC	1
10.1	12347/00	ESCUTCHEON BASE, DECK TUB, CIRC	1
10.2	12175/00	ROUND HANDLE, BRASS	1
10.3	92008	SET SCREW, CUP POINT 8-32, 3/16" L.	1
10.4	92303	SET SCREW, CUP POINT 6-32 X 5/16" L.	1

1261 LOGAN AVENUE
 COSTA MESA, CALIFORNIA 92626
 PHONE: 714.361.4800
 FAX: 714.617.3120

PHYLIRICH[®]
 Defining Luxury Since 1959

PROPRIETARY AND CONFIDENTIAL
 THE INFORMATION CONTAINED IN THIS DRAWING IS THE SOLE PROPERTY OF PHYLIRICH. ANY REPRODUCTION IN PART OR AS A WHOLE WITHOUT THE WRITTEN PERMISSION OF PHYLIRICH IS PROHIBITED.
DO NOT SCALE DRAWING

**WIDESPREAD FAUCET, LOW SPOUT,
 SINGLE ROUND BRASS HANDLE, CIRC**

SIZE **A** ASM/PRT NO. **250L-04/00**

REV
 -

SCALE: 1:5

WEIGHT: lbs.

SHEET 1 OF 2