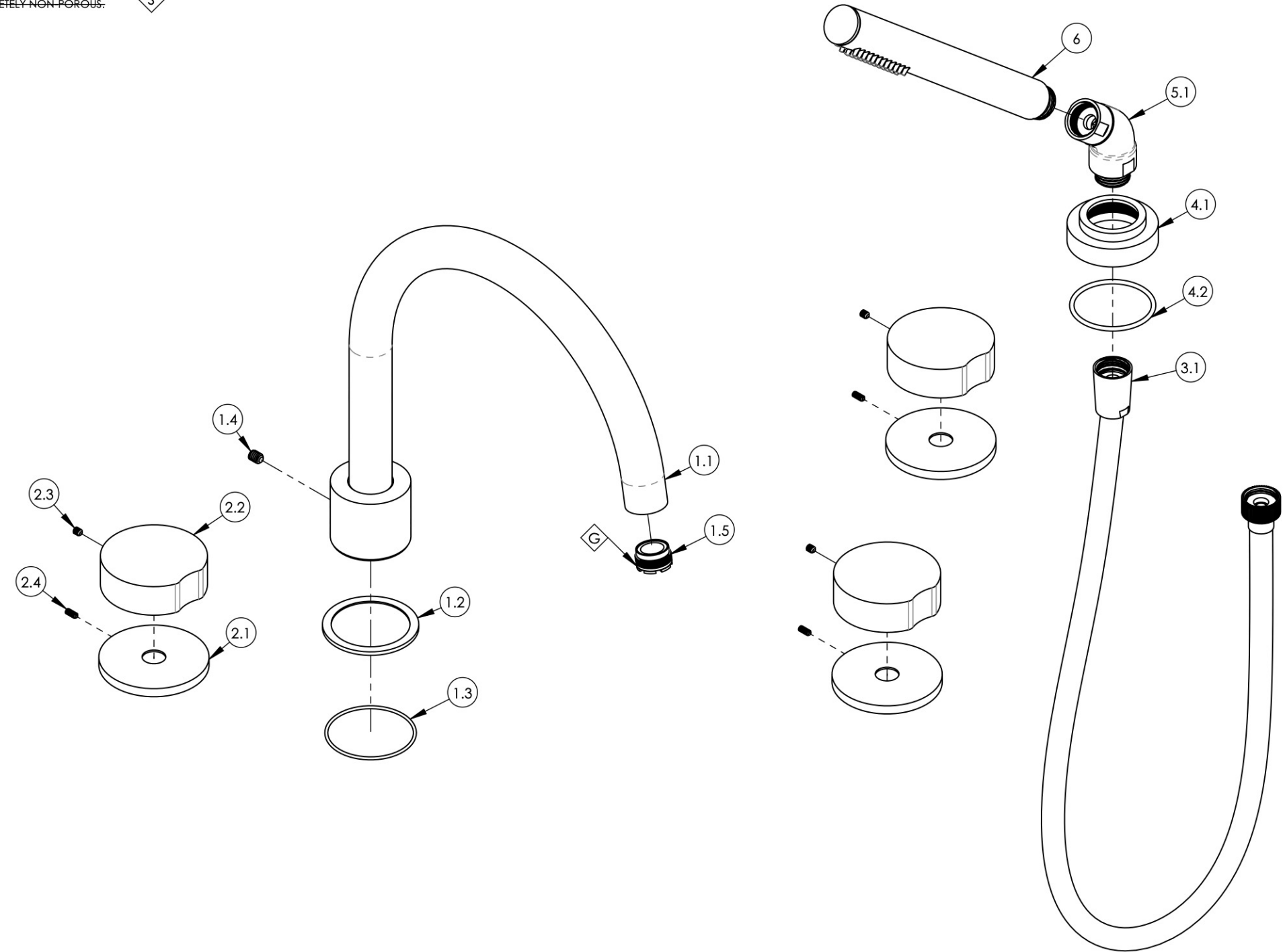


- NOTE(S):
1. PART NUMBER, "/00" DENOTES PART SHALL HAVE FINISH.
  2. APPLY NSF COMPLIANT GREASE TO ANY O-RING, SEALING JOINTS, AND/OR PIVOTAL POINTS.
  3. APPLY NSF COMPLIANT LOCTITE TO THREADED AREA.
  4. APPLY NSF COMPLIANT REMOVABLE (BLUE) LOCTITE TO THREADED AREA.
  5. SILVER SOLDER JOINTS SHALL BE FULLY WETTED VIA CAPILLARY ACTION AND COMPLETELY NON-POROUS.



ITEM NO.	PART NUMBER	DESCRIPTION	QTY.
1	3-821/00	DECK TUB, HIGH SPOUT, CIRC	1
1.1	2-427	HIGHT ARC SPOUT, DECK TUB, BRAZE, CIRC	1
1.2	11186/00	BASE FLANGE, BASIC II	1
1.3	90033	O-RING, 2"ID X 2-1/8"OD X 1/16"THK, AS-568-033	1
1.4	92127	SET SCREW, CUP PT, 1/4"-20 X 5/16" L, SS	1
1.5	P05024	AERATOR CACHE COIN SLOT, M21.5X1.0 FULL FLOW	1
2	3-819/00	ASSY, ROUND BRASS HANDLE, DECK TUB, CIRC	3
2.1	12347/00	ESCUTCHEON BASE, DECK TUB, CIRC	1
2.2	12175/00	ROUND HANDLE, BRASS	1
2.3	92008	SET SCREW, CUP POINT 8-32, 3/16" L.	1
2.4	92303	SET SCREW, CUP POINT 6-32 X 5/16" L	1
3	3-049/00	ASSY, HOSE KIT, HANDSHOWER	1
4	3-211/00	ESCUTCHEON BASE, HANDSHOWER, BASIC	1
4.1	P18030/00	ESCUTCHEON BASE, DECK TUB, HANDSHOWER, BASIC	1
4.2	90133	1 13/16"O-RING, 1-13/16ID X 3/32THK, AS-568-133	1
5	3-050/00	ELBOW ASSEMBLY	1
6	3-471/00	ASSY, ROUND HANDSHOWER, CONTEMPORARY	1

1261 LOGAN AVENUE  
COSTA MESA, CALIFORNIA 92626  
PHONE: 714.361.4800  
FAX: 714.617.3120

**PHYLIRICH**<sup>®</sup>  
Defining Luxury Since 1959

**PROPRIETARY AND CONFIDENTIAL**  
THE INFORMATION CONTAINED IN THIS DRAWING IS THE SOLE PROPERTY OF PHYLIRICH. ANY REPRODUCTION IN PART OR AS A WHOLE WITHOUT THE WRITTEN PERMISSION OF PHYLIRICH IS PROHIBITED.

INTERPRET GEOMETRIC DIMENSIONING & TOLERANCING IN ACCORDANCE WITH ASME Y14.5-2009 & ASME Y14.41-2003 STANDARDS. UNLESS OTHERWISE SPECIFIED, DIMENSIONS ARE IN INCHES. TOLERANCES ARE:			
FRACTIONS	DECIMALS	ANGULAR	
±1/16"	X.X: ±.1 X.XX: ±.01 X.XXX: ±.005	±2°	
NEXT ASSY	USED ON		
APPLICATION			
MATERIAL		NAME	DATE
FINISH		DRAWN	
<b>DO NOT SCALE DRAWING</b>		CHECKED	

**DECK TUB SET W/ HANDSHOWER, HIGH SPOUT, ROUND BRASS HANDLES, CIRC**

SIZE	ASM/PRT NO.	REV
<b>B</b>	250-48/00	-

SCALE: 1:3    WEIGHT: lbs.    SHEET 1 OF 2