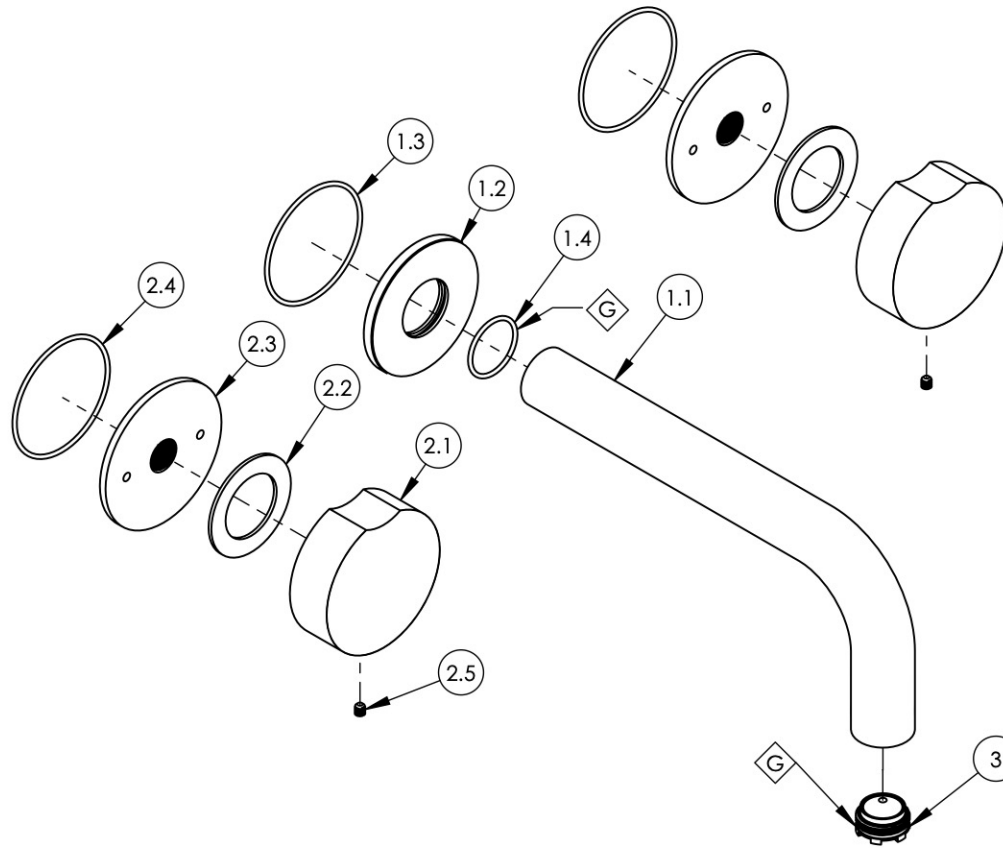


NOTE(S):

1. EXAMPLE OF SPLIT FINISH CODE:
A. 4-710/026X030
2. MARBLE HANDLE STONE OPTIONS:
A. BLACK MARBLE = 3-798 (.../00X030)
B. WHITE MARBLE = 3-797 (.../00X031)
3. APPLY NSF COMPLIANT GREASE TO ANY O-RING, SEALING JOINTS, AND/OR PIVOTAL POINTS. G
4. APPLY NSF COMPLIANT LOCTITE TO THREADED AREA. L

SEE NOTES*



ITEM NO.	PART NUMBER	DESCRIPTION	QTY.
1	3-794/00	WALL SPOUT & FLANGE, ASSY	1
1.1	P19018/00	7-1/2" WALL LAV SPOUT, BASIC SERIES	1
1.2	P19017/00	FLANGE, WALL SPOUT, CIRC	1
1.3	90033	O-RING, 2"ID X 2-1/8"OD X 1/16"THK, AS-568-033	1
1.4	90021	O-RING, 15/16"ID X 1-1/16"OD X 1/16"THK, AS-568-021	1
2	3-798/00	ROUND MARBLE HANDLE, WALL LAV, MOUNT ASSY	2
2.1	2-408	BLACK MARBLE HANDLE W/ BROACH INSERT	1
2.2	92345	WASHER	1
2.3	30545/00	ESCUTCHEON, WALL MOUNT, SHOWER	1
2.4	90033	O-RING, 2"ID X 2-1/8"OD X 1/16"THK, AS-568-033	1
2.5	92008	SET SCREW, CUP POINT 8-32, 3/16" L.	1
3	11429	AERATOR CACHE JR, 1.2GPM, M21.5X1.0, 42.2260.450	1

ZONE	REV.	DESCRIPTION	DATE	APPROVED
------	------	-------------	------	----------

REVISIONS

1261 LOGAN AVENUE
COSTA MESA, CALIFORNIA 92626
PHONE: 714.361.4800
FAX: 714.617.3120

PHYLIRICH[®]
Defining Luxury Since 1959

PROPRIETARY AND CONFIDENTIAL
THE INFORMATION CONTAINED IN THIS DRAWING IS THE SOLE PROPERTY OF PHYLIRICH. ANY REPRODUCTION IN PART OR AS A WHOLE WITHOUT THE WRITTEN PERMISSION OF PHYLIRICH IS PROHIBITED.
DO NOT SCALE DRAWING

WALL LAV, ROUND MARBLE HANDLES

SIZE A	ASM/PRT NO. 250-13/00	REV -
------------------	--------------------------	----------

SCALE: 1:3 WEIGHT: lbs. SHEET 1 OF 2