

230S-21



■ PRODUCT FEATURES

- Style: Contemporary
- Collection: Basic II
- Temperature Controlled By Pressure Balance
- Knurled Handle
- Square Trim Plate

■ TECHNICAL DETAILS

Access Hole Diameter: 5"

Handle Turn Angle: 115°

Installation Type: Wall Mounted

Primary Material: Brass

Valve Material: Ceramic

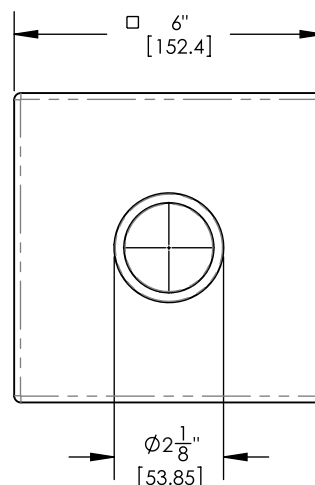
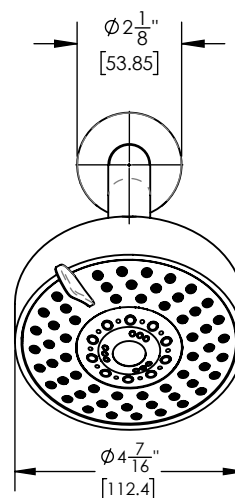
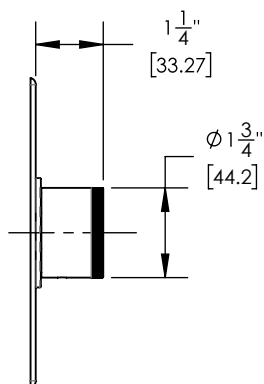
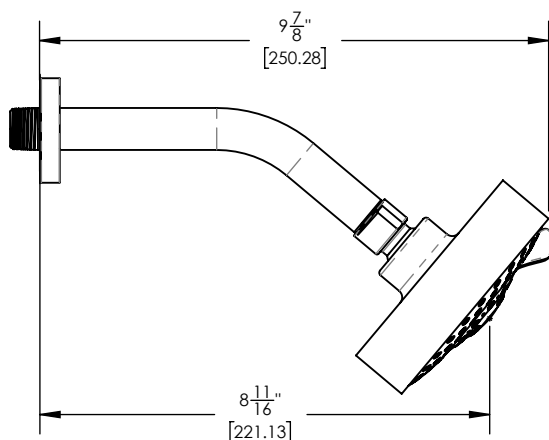
Flow Restriction: 1.8 gpm

Water Pressure Maximum: 85 PSI

Water Pressure Minimum: 20 PSI

Water Pressure Recommended: 60 PSI

■ PRODUCT DIMENSIONS



www.phylrich.com

1261 Logan Avenue, Costa Mesa, California 92626.
Phone: 714.361.4800 Fax: 714.617.3120

CODES & STANDARDS

ASME A112.181/ CSA B1251, ASME 112.18.2/ CSA B125.2, ANSI NSF, CEC

WARRANTY

Mechanical Warranty: 10 Years from date of purchase.
Finish Warranty: See catalog for further information.

Rev-