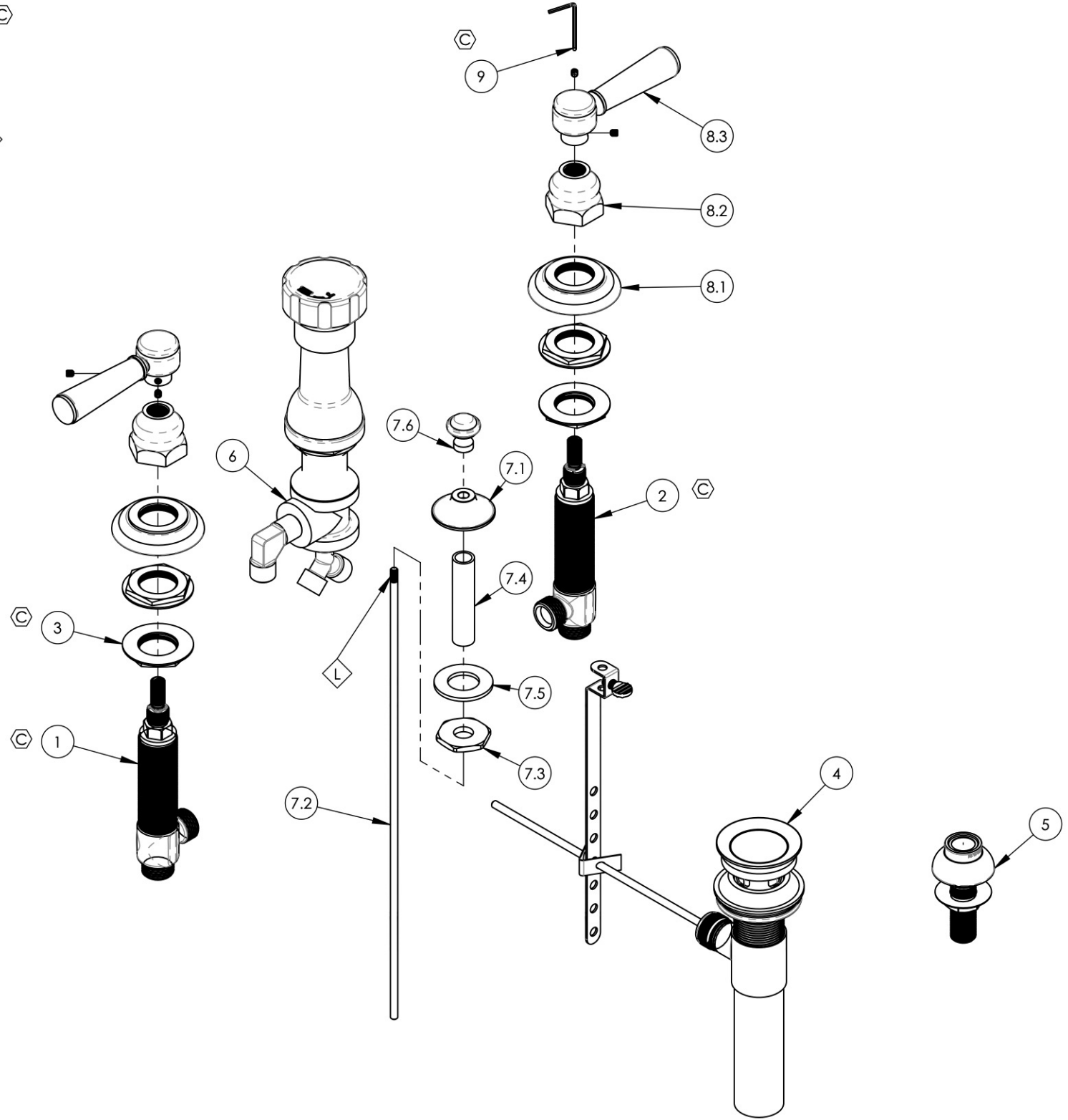


NOTE(S):

- EXAMPLE OF SPLIT FINISH CODE:  
A. 3-429/026X030
- SPLIT FINISH CODES:  
A. BLACK MARBLE = 3-429/00X030  
B. WHITE MARBLE = 3-429/00X031  
C. SOAPSTONE = 3-429/00X032
- AVAILABLE HANDLE STONE PART # OPTIONS:  
A. BLACK MARBLE = 11328 (030)  
B. WHITE MARBLE = 11329 (031)  
C. SOAPSTONE = 11330 (032)
- APPLY NSF COMPLIANT LOCTITE TO THREADED AREA.



ITEM NO.	PART NUMBER	DESCRIPTION	QTY.
1	1-149	WIDESPREAD VALVE LAV 1 6PT, HOT, ONLY	1
2	1-150	WIDESPREAD VALVE LAV 1 6PT, COLD, ONLY	1
3	2-203	MOUNTING NUT KIT, WIDESPREAD LAV	4
4	3-046/00	POP-UP DRAIN ASSEMBLY (2-101, 2-102, & 2-246)	1
5	3-085/00	ASSY, BIDET SPRAYER	1
6	3-160/00	BIDET DIVERTER, COMPLETE	1
7	3-385/00	ASSY. BIDET POP-UP ROD, HENRI SERIES	1
7.1	P09007/00	K4160 POP UP GUIDE	1
7.2	10719/00	POP-UP ROD, 10-24, 14" LONG	1
7.3	P09006	SPECIAL HEX F/BIDET SPRAYER	1
7.4	P32010	9/16-20 x 56 NIPPLE FOR COMPRESSION STEM	1
7.5	P35026	3/4" SAE FLAT WASHER	1
7.6	11153/00	POP-UP KNOB, TRADITIONAL	1
8	3-429/00	MARBLE LEVER HANDLE, HEX TRADITIONAL	2
8.1	10619/00	ESCUTCHEON, TRADITIONAL LAV 1"-20	1
8.2	10621/00	BASE HUB NUT	1
8.3	2-142/00	MARBLE LEVER HANDLE, 500 SERIES, HEX TRADITIONAL	1
9	P39001	HEX KEY 5/64, FOR 8-32 SET SCREW	1

ALL	C	UPDATE TEMPLATE/ VALVES, ADD HEX KEY, MARBLE NOTES & CALL OUTS	4/24/2020	AMM
ZONE	REV.	DESCRIPTION	DATE	APPROVED
REVISIONS				
		1261 LOGAN AVENUE COSTA MESA, CALIFORNIA 92626 PHONE: 714.361.4800 FAX: 714.617.3120	<b>PHYLIRICH</b> Defining Luxury Since 1959	
		<b>PROPRIETARY AND CONFIDENTIAL</b> THE INFORMATION CONTAINED IN THIS DRAWING IS THE SOLE PROPERTY OF PHYLIRICH. ANY REPRODUCTION IN PART OR AS A WHOLE WITHOUT THE WRITTEN PERMISSION OF PHYLIRICH IS PROHIBITED.		

NEXT ASSY	USED ON	FRACTIONS ±1/16"	DECIMALS X.X: ±.1 X.XX: ±.01 X.XXX: ±.005	ANGULAR ±2°
APPLICATION		MATERIAL	NAME	DATE
FINISH		DRAWN	LLO	11/4/2015
DO NOT SCALE DRAWING		CHECKED	GRE	

<b>FOUR HOLE BIDET SET, MARBLE LEVER HANDLES, HENRI SERIES</b>		
SIZE	ASM/PRT NO.	REV
<b>B</b>	161-62/00	<b>C</b>
SCALE: 1:3.5	WEIGHT: lbs.	SHEET 1 OF 2