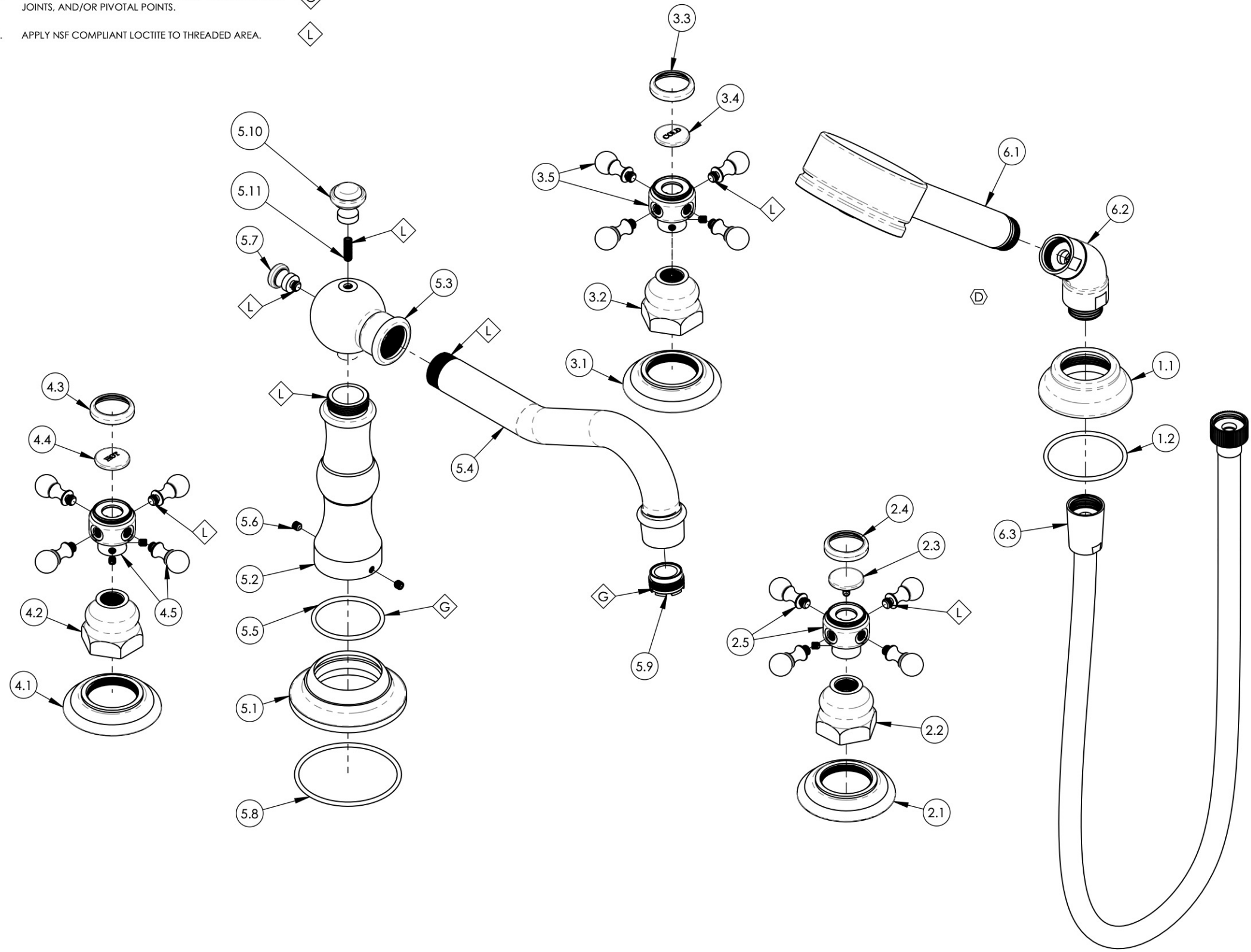


- NOTE(S):
1. APPLY NSF COMPLIANT GREASE TO ANY O-RING, SEALING JOINTS, AND/OR PIVOTAL POINTS. G
 2. APPLY NSF COMPLIANT LOCTITE TO THREADED AREA. L



ITEM NO.	PART NUMBER	DESCRIPTION	QTY.
1	3-210/00	ESCUTCHEON BASE, HANDSHOWER, TRADITIONAL	1
1.1	P18001/00	ESCUTCHEON BASE, DECK TUB, HANDSHOWER, TRADITIONAL	1
1.2	90133	1 3/4" O-RING, 1-13/16 ID X 3/32 THK, AS-568-133	1
2	3-382B/00	CROSS HANDLE ASSEMBLY, DECK TUB (BLANK)	1
2.1	10620/00	ESCUTCHEON, TRADITIONAL RT 1-1/4"-20	1
2.2	10621/00	BASE HUB NUT	1
2.3	11097	PLASTIC BUTTON, BLANK	1
2.4	10538/00	CAP RING FOR 500 SERIES BUTTON	1
2.5	2-180/00	SUB ASSY. CROSS HANDLE HUB	1
3	3-382C/00	CROSS HANDLE, DECK TUB (COLD)	1
3.1	10620/00	ESCUTCHEON, TRADITIONAL RT 1-1/4"-20	1
3.2	10621/00	BASE HUB NUT	1
3.3	10538/00	CAP RING FOR 500 SERIES BUTTON	1
3.4	11098	PLASTIC BUTTON, COLD	1
3.5	2-180/00	SUB ASSY. CROSS HANDLE HUB	1
4	3-382H/00	CROSS HANDLE ASSEMBLY, DECK TUB (HOT)	1
4.1	10620/00	ESCUTCHEON, TRADITIONAL RT 1-1/4"-20	1
4.2	10621/00	BASE HUB NUT	1
4.3	10538/00	CAP RING FOR 500 SERIES BUTTON	1
4.4	11099	PLASTIC BUTTON, HOT	1
4.5	2-180/00	SUB ASSY. CROSS HANDLE HUB	1
5	3-395/00	ASSY. DECK TUB SPOUT, MAISON SERIES	1
5.1	11273/00	ESCUTCHEON, BASE SPOUT RISER	1
5.2	11274/00	SPOUT RISER, DECK TUB	1
5.3	11275/00	BALL TRANSITION, DECK TUB RISER	1
5.4	2-146/00	SUB ASSY. SPOUT BRAZED AERATOR HOUSING	1
5.5	90129	O-RING, 1-9/16" ID X 3/32 THK, AS-568-129	1
5.6	92024	SET SCREW, CUP POINT 10-24 UNC 3/16" LENGTH	2
5.7	11152/00	FINIAL END BACK, TRADITIONAL	1
5.8	90142	O-RING, 2-3/8" ID X 3/32 THK., AS-568-142	1
5.9	P05024	AERATOR CACHE COIN SLOT, M21.5X1.0 FULL FLOW	1
5.10	11153/00	POP-UP KNOB, TRADITIONAL	1
5.11	92152	SET SCREW, CUP PT. 10-24 UNC X 5/8" L	1
6	4-524/00	HAND SHOWER HEAD, ELBOW, HOSE, SINGLE FUNCTION STILO 70	1
6.1	3-066/00	HANDSHOWER, SINGLE FUNCTION STILO 70	1
6.2	3-050/00	ELBOW ASSEMBLY	1
6.3	3-049/00	ASSY. HOSE KIT, HANDSHOWER	1

D4	D	UPDATE HAND SHOWER ASSEMBLY	10/8/2020	AMM
ZONE	REV.	DESCRIPTION	DATE	APPROVED
REVISIONS				
1261 LOGAN AVENUE COSTA MESA, CALIFORNIA 92626 PHONE: 714.361.4800 FAX: 714.617.3120		PHYLIRICH Defining Luxury Since 1959		
PROPRIETARY AND CONFIDENTIAL				
THE INFORMATION CONTAINED IN THIS DRAWING IS THE SOLE PROPERTY OF PHYLIRICH. ANY REPRODUCTION IN PART OR AS A WHOLE WITHOUT THE WRITTEN PERMISSION OF PHYLIRICH IS PROHIBITED.				

INTERPRET GEOMETRIC DIMENSIONING & TOLERANCING IN ACCORDANCE WITH ASME Y14.5-2009 & ASME Y14.41-2003 STANDARDS. UNLESS OTHERWISE SPECIFIED, DIMENSIONS ARE IN INCHES. TOLERANCES ARE:		
NEXT ASSY	USED ON	
APPLICATION		
MATERIAL	NAME	DATE
FINISH	DRAWN	10/29/2015
DO NOT SCALE DRAWING		
CHECKED	GRE	

DECK TUB W/ HAND SHOWER, CROSS HANDLES, HENRI SERIES		
SIZE	ASM/PRT NO.	REV
B	161-48/00	D
SCALE: 1:2.75	WEIGHT: lbs.	SHEET 1 OF 2